



**Innovation
that excites**

NISSAN X-TRAIL



LIFE'S WAITING

You need a vehicle that's as open to adventure as you are. The all-new Nissan X-TRAIL has the capability to take you where you want to go with the comfort, technology and style to ensure a premium drive. Keep up with your true self.





ADVENTURE BEGINS IN THE ADVANCED COCKPIT.

Designed with state of the art technology, Nissan X-TRAIL's intuitive cockpit makes you feel one with the vehicle, further fueling your passion for driving. Nissan X-TRAIL delivers, with best-in-class front head room and the supreme comfort of fatigue-reducing spinal support front seats. With tasteful touches like the power tilt and slide sunroof, double stitched leather-appointed seats* and LED interior lighting, this is one natural, relaxed, and decidedly upscale environment.**

*Leather accented features and upholstery may contain synthetic materials
**Features and function may vary by grade



CRUISE IN STYLE AND COMFORT.

The Nissan X-TRAIL's wide and spacious interior with cleverly designed tiered, theatre style seating and premium touches let you savour a sense of luxury and refinement, making every ride a blissful adventure. Available in 5 or 7 seats, you don't need to leave anyone or anything behind.*

* 7 seat optional on some model grades

SLIDE, GLIDE AND SWING WIDE.

EZ Flex™ Seating System. A truly first class 2nd row, with 40/20/40 split seats that slide forward for easy access, adjusts to give you more cargo space or leg room and can also be reclined*.

* Available on 7 seat models

Easy to access 3rd row. Nissan X-TRAIL's 50/50 split folding 3rd row seat gives you added flexibility carrying passengers and their gear, and folds down to make a flat cargo floor for maximum carrying space.

Rear 80° wide opening doors. The all-new Nissan X-TRAIL makes it easy to get it all in - and out - with rear doors that obligingly swing open 80°.

Sensor activated tailgate*. Got your hands full? No problem. Simply wave an object by the motion sensor and the tailgate opens for you.

* Only available on LE models





PACKED WITH POSSIBILITIES.

Diverse seating arrangements that offer flexible adaptation to suit your cargo needs - both luggage and passengers. Nissan X-TRAIL gives you possibilities you never knew you had.



FLEXIBLE SPACE

With seating and luggage space that fits whatever your requirements are, the all-new Nissan X-TRAIL gives you room to manoeuvre.

01 The 2nd seat fold-down centre armrest, for long items while carrying 4 occupants.

02 Generous loading space even with 3 occupants.

03 Maximized luggage room with the 2nd and 3rd seats folded down.



PERFORMANCE FOR EVERY ADVENTURE.

It is possible to have the best of both worlds with the all-new Nissan X-TRAIL - you get all the adventure ready performance you can handle, neatly packaged in a car that's naturally as fuel efficient as it is economical. Designed for effortless driving, the advanced engine and virtually gearless XTRONIC CVT work seamlessly together for a thrilling ride.

Engines. The Nissan X-TRAIL gives you the choice of advanced petrol or diesel engines, available in either 2WD or 4WD, with each one delivering responsive power and outstanding fuel economy.

XTRONIC CVT. The Nissan X-TRAIL is fitted with Nissan's very latest version of XTRONIC CVT, which reduces friction by up to 40% while improving acceleration at low speeds and improving highway fuel economy.

Engine	Axle	Transmission	Output (kW)	Torque (Nm)
2.0L Petrol	2WD	6-speed MT	106	200
2.5L Petrol	AWD	XTRONIC CVT	126	233
1.6L Turbo Diesel	2WD	6-speed MT	96	320
	AWD	6-speed MT	96	320

TOTAL CONTROL. COMPLETE CONFIDENCE.

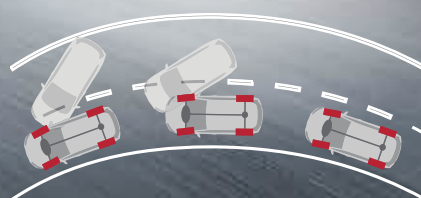
The all-new Nissan X-TRAIL is engineered with a range of innovative technology including Chassis Control and ALL-MODE 4x4-i, that enables it to have an intuitive response to every driving situation for a smoother and more controlled ride. Designed to keep you safe, giving you the confidence to stay calm and collected on every drive.



Intuitive 4x4. The ALL-MODE 4x4-i system makes the all-new Nissan X-TRAIL capable on-road and off. For maximum fuel efficiency choose 2WD. In Auto Mode conditions are constantly monitored and the balance of power between front and rear wheels is adjusted for best traction. Challenging conditions? 4WD Lock Mode is your choice.



Active Engine Brake. Whether you're slowing for a corner or coming to a stop, this system uses the XTRONIC CVT transmission to apply engine braking – much like shifting to a lower gear in traditional transmissions – to help give smoother deceleration and a more confident feel when braking. Only available on XTRONIC CVT models.



Active Trace Control. A turn for the better, this innovative technology helps improve control when you take a corner. It reads the cornering situation and, if needed, can brake each wheel individually to help you steer through the turn with confidence.



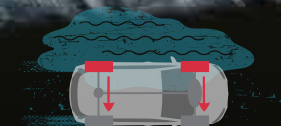
Active Ride Control. Fear no bump. With Active Ride Control, the Nissan X-TRAIL can automatically apply braking and adjust engine torque after you hit a bump to smooth out your ride.



Hill Start Assist (HSA). Up, up, and smoothly away. HSA helps prevent rollback when starting on an incline.



Hill Descent Control (HDC). Descend on a steep decline safely, as HDC controls the brakes for you, letting you focus on steering.



Active Brake Limited Slip (ABLS). To help provide better grip in slippery conditions, ABLS can apply braking to an individual wheel when it starts to spin.



INNOVATION THAT'S RIGHT IN FRONT OF YOU.

Traffic jams. Dinner plans. With so much going on around you, it's easy to get distracted. Advanced Drive-Assist Display (ADAD) is a full colour 5" display to help you stay on track and on top of things when you're on the go in your all-new Nissan X-TRAIL.

From turn-by-turn navigation to caller ID and so much more*. ADAD gives you all the information you need directly in front of you, keeping you focused on the road ahead.

*Features and functions may vary by grade



iPOD®



COLOUR SELECTION



DRIVING AIDS



TURN-BY-TURN NAVIGATION



AVERAGE SPEED



FUEL ECONOMY

NISSANCONNECT™ STAY IN TOUCH WHEN YOU'RE ON THE MOVE.

NissanConnect is smart technology that keeps your world within reach when you're on the move. And with NissanConnect® Apps, your all-new Nissan X-TRAIL becomes your smartphone's best friend, with music, information and apps you and your family love, coming together through the 7" touch screen display and audio system.

Nissan Navigation System. The latest maps, the most direct routes and the smartest way to get to your destination on time and fuel efficiently.

Online Search - powered by Google®. Based on the latest information, Google® Online Search helps you pinpoint your desired destination, even if you don't know the name or category.

Facebook®. Launch the Facebook® app and your Nissan's got room for 200+ of your closest friends. Follow your news feed to find out what everyone's up to, check in with your network on arrival at your destination - you can even update your status to suit.

NissanConnect available as part of the optional Techno Pack on SE and LE models





NISSAN AROUND VIEW MONITOR. 360° OF SAFE.

The Nissan X-TRAIL offers the available Around View Monitor*, with 4 cameras that give you a virtual 360° bird's-eye view of your vehicle. The virtual view is displayed via a selectable split-screen showing close-ups of the front, rear and curb views. The system also works at low speed, brilliant when you're in challenging off-road conditions.

*Around View Monitor available as part of the optional Techno Pack on SE and LE models

The perfect pull in. When in Drive, camera 1 gives both a front and overhead view so you can confidently go all the way into your parking space.

CAMERA
1

Complete the picture. Located under your side mirror, this camera helps round out your virtual 360° bird's-eye view, whether you're in Drive or Reverse.

CAMERA
4

Don't scratch your wheels. In Drive or Reverse you can push the camera button to switch out the overhead for a side view. A great help for seeing how close you are to the curb.

CAMERA
2

CAMERA
3

Cover your back. In Reverse, camera 3 shows what's directly behind you, whilst the overhead view helps with lower objects that can't be seen out of your window.

NISSAN SAFETY SHIELD PHILOSOPHY

INNOVATION THAT LOOKS OUT FOR YOU.

At Nissan safety is more than just a philosophy; it's an integral part of every vehicle we make. Our comprehensive approach to safety guides the engineering and development of all our cars - and it not only works to keep you and your family safe, it gives the driver the self-assurance to know that they can rely on their vehicle, and confidently handle unexpected situations.

Keeping an eye out. Smart technologies help monitor your vehicle's systems and surroundings. Like a warning when you're straying from your lane, or a system that helps ensure you know when there's something in your blind spot.



Blind Spot Warning*.

If another vehicle is detected in your blind spot area, an indicator appears on the driver or front passenger door mirror and on the Advanced Drive-Assist Display. When you're indicating to change lanes and a vehicle is dangerously close, the light will flash and a warning chime will alert you.



Lane Departure Warning*.

If Nissan X-TRAIL detects that you're straying from your lane, the Lane Departure Warning system will give both a visual and audible alert. The system is so smart, it's designed to stop the warnings whenever your turn signal is engaged.



Moving Object Detection*.

When the Around View Monitor is in use and detects something moving by the vehicle, it gives a visual and audible alert.



Helping you respond. When you need to hit the brakes hard or suddenly manoeuvre around an obstacle, these standard technologies help you respond to a potentially harmful situation.

Vehicle Dynamic Control helps you maintain your steered path.

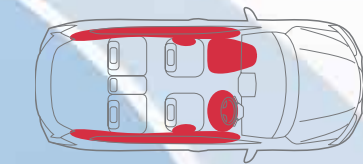
Traction Control System helps reduce wheelspin in low-traction situations.

Anti-lock Braking System helps you maintain steering control around obstacles while braking heavily.

Electronic Brake force Distribution sends extra force to the rear brakes when you have additional weight of passengers or cargo in the back.

Brake Assist helps apply maximum braking force if it detects hard braking and senses you are in an emergency situation.

Helping protect you. When a collision is unavoidable, Nissan's Zone Body Construction helps absorb the impact while the advanced seatbelt and airbag systems help protect passengers.



6 STANDARD AIRBAGS

Driver and front-passenger supplemental front impact airbags
Front seat-mounted side-impact supplemental airbags
Roof-mounted curtain side-impact supplemental airbags
ISOFIX System (Lower Anchors and Tethers for children)



SAFETY SHIELD

*Blind Spot Warning, Lane Departure Warning and Moving Object Detection available as part of the optional Techno Pack on SE and LE models

GENUINE NISSAN ACCESSORIES

Every Genuine Nissan Accessory is: custom-fit, custom-designed and durability-tested.

1. Front over rider
2. Front styling plate
3. Bonnet guard
4. Silver side sill protectors
5. Window visors
6. Body side moldings
7. Headlight guards



Illuminated front fog lamps



Illuminated entry guards and carpet set



Front over rider and front styling plate



Rear bumper protector and rear styling plate



Speak to your Nissan dealer or visit www.nissan.co.za for more information on the full range of Nissan Approved accessories. Some accessories are not compatible with all model grades.

COLOURS



RED - S - AX6



GREYISH BLUE - M - RAQ



COPPER BLAZE - PM - EAR



MILITARY GREEN - PM - EAN



GUN METALLIC - M - KAD



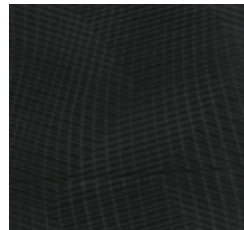
NEW SILVER - M - K23



BRILLIANT WHITE - M - QAB

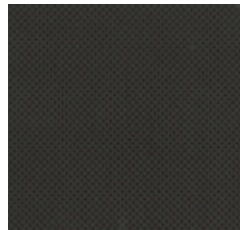
S - solid
M - metallic
PM - pearl metallic

TRIM XE AND SE



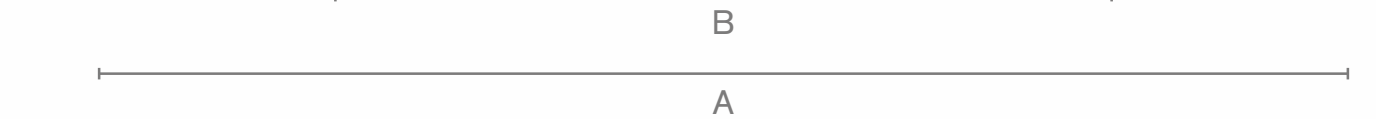
CLOTH BLACK

TRIM LE



FULL LEATHER BLACK

DIMENSIONS




- A: Overall length: 4 640mm
- B: Wheelbase: 2 705mm
- C: Ground clearance: 209mm
- D: Overall width: 1 820mm
- E: Overall height: 1 710mm



visit our website at: www.nissan.co.za

Phone us toll free on: 0800 NISSAN (647 726)

Follow Nissan on:

 /NissanSouthAfrica

 @Nissanza

September 2014

BR14E0T32A0