



**04**  
**DESIGN**

The pioneering spirit. Time for another revolution

**08**  
**'OMOTENASHI'**

The ultimate luxury car experience

**14**  
**CRAFTSMANSHIP**

Taking craft into a new dimension

**18**  
**TECHNOLOGY**

A luxury car that is also a driver's car

**20**  
**PERFORMANCE**

To achieve the greatest ever combination of agility and comfort

**22**  
**SAFETY**

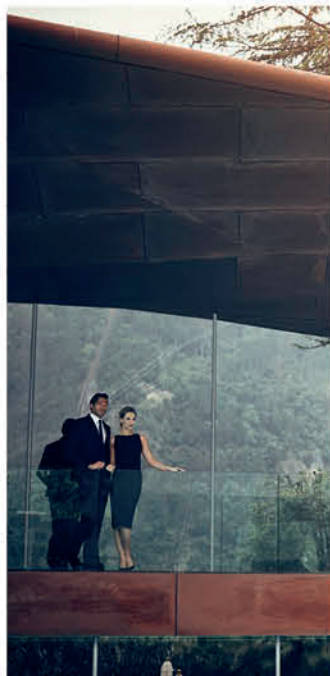
A groundbreaking range of safety and driver support technologies

**24**  
**SELECT**

We invite you to prepare for the excitement of choosing your new Lexus LS

**58**  
**THE LEXUS EXPERIENCE**

Learn how we aim to treat every customer as if they were a guest in our own home



The new LS redefines the luxury car. The result of a five-year creative development process, it combines the spaciousness of a long wheelbase four-door sedan with the irresistible looks of a low, coupé-like profile. Inside you'll discover an interior unlike that of any luxury car before, distinguished by refined Japanese aesthetics, exquisite craftsmanship and imaginative technology. Wherever you are seated, you will enjoy supreme comfort provided by seats with multiple power adjustments, heating, and cooling functions. A massage function is available on all seats, while an optional reclining rear seat offers over one metre of legroom, the most generous in its class.

The dynamic appearance of the LS is matched by its superb performance. The low driving position and driver-focused cockpit have been conceived with the aim of making driving a truly rewarding experience. Thanks to a new platform shared with the LC luxury coupé, this flagship sedan offers outstanding handling agility, combined with supreme comfort and refinement. The LS is available as the twin-turbo V6-powered LS 500 or the LS 500h Multi Stage Hybrid - a breakthrough technology that transforms the Lexus Self-Charging Hybrid powertrain performance. Whichever LS you choose, as a Lexus owner you'll also enjoy our unique Japanese 'Omotenashi' hospitality.









## THE PIONEERING SPIRIT: TIME FOR ANOTHER REVOLUTION

When he was asked to lead the design of the new flagship for Lexus, Chief Designer Koichi Suga might have felt the weight of history on his shoulders. After all, it is no small challenge to conceive an LS. This would be the fifth in a line of prestigious cars that began in 1989 with the revolutionary LS 400 sedan - the car that announced the arrival of Lexus as a new force in luxury cars.

But his thoughts were more on the future than the past. We didn't want to create a vehicle that was bound by the tired conventions that had defined luxury cars until now. Our vision was a car with a fresh, emotional appeal that would go far beyond what the world expects and set new standards for luxury cars in the future, just as the first LS did all those years ago.

As he mulled over the scale of his task, Koichi Suga could take solace in the following: on his side he had plenty of time and massive design resources. Planning for the new flagship began five years ahead of the launch. "Design took up a much larger portion of the development schedule than usual," he explains. "We ended up with seven mock-ups in three and a half years - it was unbelievable considering what a typical vehicle development process looked like."

From the very beginning, the chief designer had a clear image in his mind: the new LS would have a sleek, stylish silhouette with a sweeping coupé-like roofline; it would be "irresistibly sexy and sporty", with a wide, road-hugging stance. At the same time it would have immense presence, as befits a flagship

vehicle. And, while rejecting the 3-box construction of the stereotypical luxury sedan, there could be no compromise in terms of interior comfort and space.

At first he found it hard to realise these ideas on paper. "When I drew lines on large sheets, my hand tended to follow well-worn grooves, which lulled me towards fairly predictable designs. So I went out on a limb and tried a different tactic. I began to sketch on smaller slips of paper, purposely constraining my movements so that the lines would not flow automatically. After nearly a hundred tries, I picked out about twenty of the best ones and started making tiny clay models no bigger than the palm of my hand."

## DESIGN



It was a breakthrough. The new designs had an unmistakable air of adventure and excitement.

But the work was only just beginning. In these days of virtual reality it might strike some as strange or even quaint that Lexus still uses traditional clay modellers. But at this level a car is nothing if not art. Our 'Takumi' masters, who carved the car over and over again, played a vital role in refining its lines. It's in part thanks to them that when you look at the LS you are first struck by the bold simplicity of its overall form, and then your eye is held by the intriguing sensual beauty of the sculpting.

Of course, we also used computers. Take the exquisitely detailed 'spindle grille', for example. The design is so elaborate that it took three and a half months for our design team to calculate all the elements using an advanced computer system. The more elaborate and sporty grille on the F SPORT took even longer.

Gruelling work. But when we set out to create a flagship car that symbolises a brand and sweeps people up in a wave of emotion, we knew that we would have to push ourselves far beyond normal limits and reclaim our pioneering spirit.





---

INSPIRED BY OMOTENASHI:  
THE ULTIMATE LUXURY  
CAR EXPERIENCE

---

## OMOTENASHI

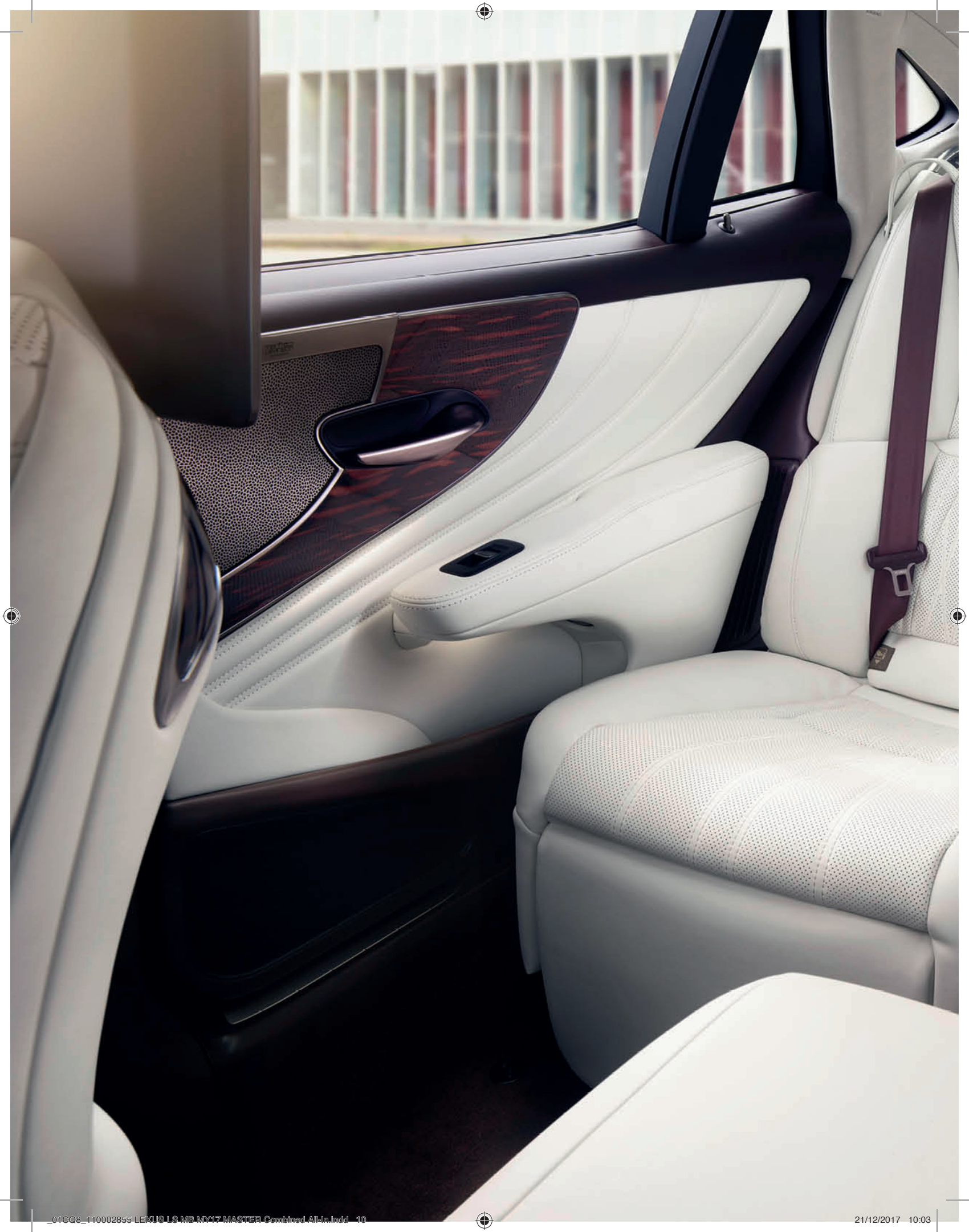


'Omotenashi' is a time-honoured Japanese concept that's all about anticipating the needs of people, even before they arise. It raises hospitality to an art form, as in the famous tea ceremony, where every guest is treated with warmth, understanding and respect. In the new LS the principles of 'Omotenashi' have inspired us to create the ultimate luxury car experience.

Even before you get behind the wheel, the LS is preparing its welcome. As you approach, the door handles light up to greet you and the ground beneath the doors is illuminated to help you avoid stepping into puddles. To make it easy for you to enter, the car gently raises itself three centimetres on its air suspension, the height of the driver's seat is automatically lowered and the bolsters on the seat cushions glide aside, returning into position once you

are seated to keep you snugly in place. And to help you fasten the seatbelt, the buckle automatically lifts up to meet your fingertips.

Now you become aware of the beautiful cabin around you, elegantly illuminated at night, with everything you require for your comfort and convenience thoughtfully placed exactly where you need it - down to the smallest details. When reversing - and there are no rear passengers - the rear seats automatically recline to give you a better view. And if you do have rear passengers, every courtesy is extended to them. For example, if they wish to watch the entertainment system the car gently adjusts the position of their seat to give them the most relaxing position, while tilting the monitor for the best viewing angle.









01

### REAR SEAT LUXURY

Travelling in one of the power seats in the rear of the new LS, you will enjoy supreme comfort. If you want to stretch out, just choose the 'Relax' position: the rear relaxation seat automatically extends to support your legs, while the seat reclines to 48° - an angle selected after extensive testing, both static and dynamic, with people of a variety of builds and body types.

### REAR MASSAGE SEAT

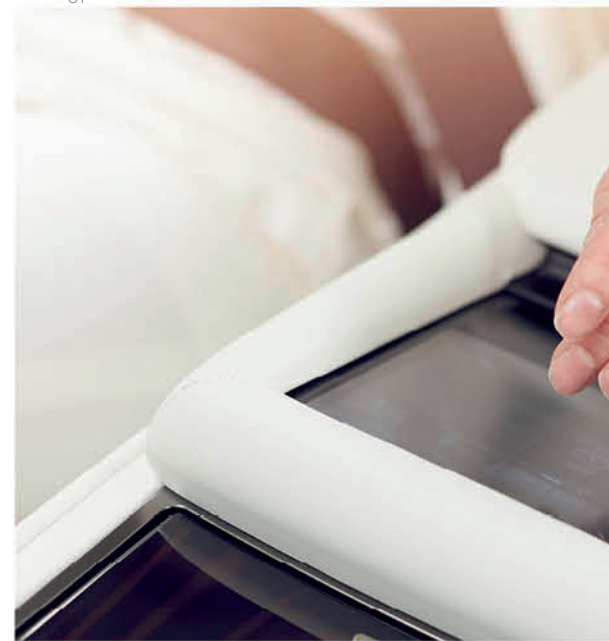
Both rear seats in the LS are available with a highly sophisticated massage function to reduce fatigue and enhance relaxation. To develop the system we worked closely with an expert in the Japanese technique of shiatsu massage, who advised us on the precise amount of pressure to be applied, its duration, rhythm and flow. The results are deeply satisfying, and very different to anything you may have experienced before.

### CLASS-LEADING LEGROOM

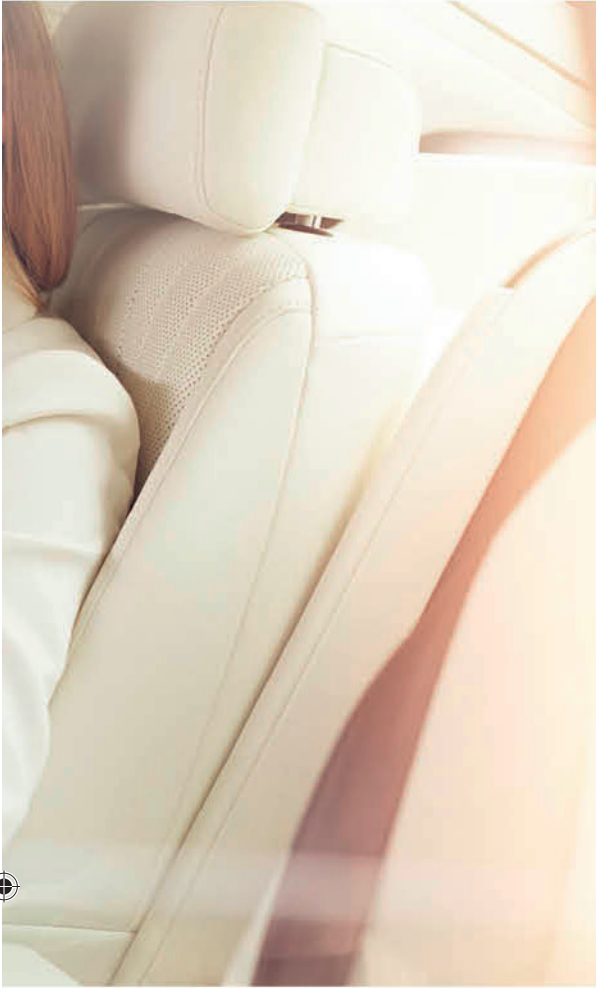
Positioned behind the front passenger seat you will enjoy one metre of legroom (1022 mm to be precise). No competing model offers more.

### LEXUS CLIMATE CONCIERGE

The Lexus climate concierge individually orchestrates the ideal climate for each person in the car. For example, the system detects the body surface temperature of each occupant as they enter the car, and then sets about achieving comfortable conditions as quickly as possible. If the sun is shining into the car from the driver's side on a hot day, the system will control airflow and temperature to keep the driver cool, while avoiding excessive cooling of the passenger's side.



02



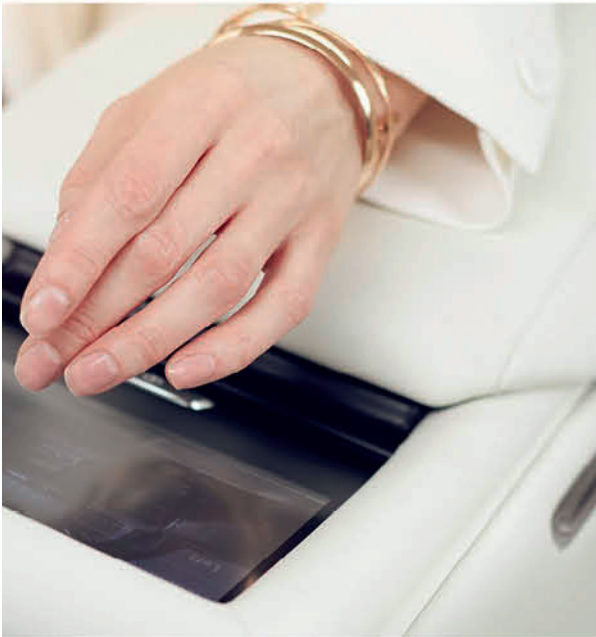
03

**REAR SEAT ENTERTAINMENT**

The power rear seat of the LS provides a superb environment in which to enjoy on-screen entertainment. The vivid 11.6-inch screen supports high definition output. It's located on the back of the front seat and its angle can be electrically adjusted at the push of a button. By selecting the 'Entertain' seat function, the power rear seat automatically adjusts its position and the screen tilts to give you the perfect viewing angle.

**3D MARK LEVINSON®**

Listening to music in the LS through the 3D Mark Levinson® QLI Reference Surround system is like actually being in the concert hall, with rich, dynamic 3D sound that is thrillingly precise and natural. It's made possible by groundbreaking QLI (Quantum Logic Immersion) technology that separates the audio source into individual streams - vocals, instruments and spatial sound information - similar to the original arrangement. These audio streams are then mixed to re-create a full three-dimensional sonic environment. The new system was developed as the benchmark against which all others will be compared for the next ten years.



04

- 01 Rear relaxation seat
- 02 Controls for the wide range of rear seat functions at your fingertips
- 03 Rear Seat Entertainment
- 04 Rear multi-operation panel for control of rear seat functions

## THE CRAFT



01

I am getting an elevator masterclass in the ancient art of origami. This is what happens when you mention "paper planes" to a master origamist as you ascend the building.

"Robotics, satellite technology, medical devices, energy-saving architecture, even things like fashion and contemporary cuisine," Koichi Suga tells me. "These industries all design things using the same mathematical principles that we use to fold paper into complex shapes, so there are many parallels and overlaps.

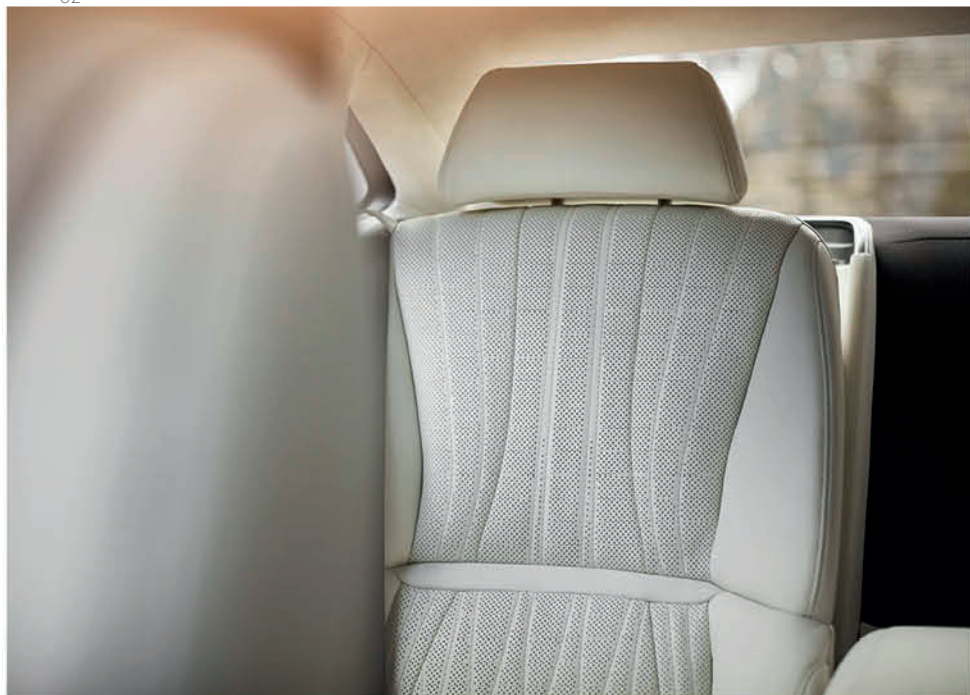
"Of course, in Japan and lots of other places, origami is still a game for children to fold swans and cranes and things like that, but the industrial or technological applications are almost endless. From microscopic robots to huge solar panels in space, origami is literally all around us," he says. "Not forgetting cars," he adds with a smile.

Chief Designer Koichi Suga leads the team of specialists whose craft helped design the new Lexus LS. Usually based in Kyoto, their skill and reputation are such that they were drafted specially onto the project to integrate the principles of origami into the artistic development of the car.

We are meeting at the headquarters of Lexus design, an imposing four-storey building in Aichi Prefecture, Japan, where prototypes including the new LS are created. There is a quiet but unmistakable hum of satisfaction in the studio.



02



04

## CRAFTSMANSHIP



- 01 Intuitive Touch Pad control of Lexus Premium Navigation
- 02 'Takumi' craftsmanship - exquisite stitching
- 03 Elegantly hand-pleated door panel with Kiriko glass inlay
- 04 Sophisticated design and refined execution of rear seat



"It's been a very exciting project but challenging too," my host tells me as we walk past intriguing looking mock-ups and pre-production models. "The aim was to incorporate the delicate, complex patterns of origami in the interior design and it took a lot of practice to make it perfect."

The artisans had to come up with actual paper mock-ups that could be crafted into the body of the car, notably the door trim and panels, and he estimates that they folded "hundreds, maybe a thousand" shapes until they had something the designers could work with.

The result is a quite beautiful, three-dimensional combination of patterns and textures that literally bring the door trim to life. Like all origami-inspired art, the interior trim is at once

simple and understated, yet highly sophisticated. (The Japanese have a word for this: 'Shibumi'.)

It's a mesmerising piece of work, from the elegantly hand-pleated panels that invoke the distinctive Lexus 'L' motif to the glorious, glittering piece of Kiriko cut glass that surrounds the door handle. Like origami, Kiriko glass is another of Japan's most famous artistic traditions (and exports) and it is a fitting adornment to this piece of Japanese craftsmanship.

The glass seems to change expression depending on the intensity and angle of the light. I have never seen anything so exquisite in any car, anywhere. Such delicacy befits the artistic world, but the automotive world? "It might look delicate or even fragile but it has been reinforced with the most advanced technology," says Koichi Suga.

The Kiriko glass - a re-imagining of the Lexus front grille - is a show-stopper of a detail that heightens the sense of luxury and refinement. Similarly striking is the gorgeous 'art wood' finish of the ornamentation panel, and the elegant magnesium fins of the dashboard, which were inspired by the strings of a Japanese harp. The overall impression is indeed that of high art.

We come to a halt at a door to an annex off the main studio. Koichi Suga is needed inside. I thank my host for his time and generosity, and we shake hands. As he opens the door, I catch a glimpse of a full-size, wooden mock-up with maybe half a dozen designers and artisans huddled around it, all intently focused on one small area.

"Time to go to work," grins the Chief Designer.

CRAFTSMANSHIP



## MADE IN TAHARA

This is the Tahara automotive plant in Aichi, birthplace of the latest generation Lexus LS, as it was for the previous four generations. Our guide is Kenji Suzuki, a retired 'Takumi' craftsman, who worked on the very first LS back in 1989.

As we make our introductions, I am drawn to his hands. An artist's hands. Amidst all the cutting edge technology we will witness here in one of Japan's most automated automotive plants, it's the human tools that stand out.

At 4 million square metres, Tahara is vast. Yet Suzuki welcomes us as he would into a craftsman's atelier. He wants to talk about his colleagues as much as the technology around them.

En route to the paint shop we are met by a sea of steel rolls, all waiting in order to be cleaned twice before being stamped into those seductive panels that make up the LS. It's all under the watchful eye of the 'Takumi' on their constant search for imperfection - the scarcely perceptible surface blemish, the minutest tooling defect.

We enter the paint shop to see gleaming paintwork being painstakingly wet sanded by hand to create that perfect finish. Then the

mood changes and RGB lighting takes over, ensuring the end result is, well, perfection. A word we hear a lot.

The teams in assembly mirror the harmony here between man and machine. While high precision lasers ensure the tightest of tolerances, these are craftsmen who can feel the difference between a 1 mm and a 2 mm gap. They know what that millimetre means in terms of dashboard vibrations. Meanwhile their colleagues are lovingly fitting the carefully selected leather hide and herringbone wood-inlaid door panels that characterise the new LS.

Suddenly the background rhythm that has accompanied us on our tour is gone, and we find ourselves in complete silence. While the noise has stopped, the work has not. I look across at Suzuki and sense him switching his tactile faculties for his aural ones. We're in the quiet room, where the 'Takumi' meticulously inspect each LS for smooth running using their highly honed hearing and ultra-sensitive microphones.

We grab a final word with one of the LS test drivers, who get to road test every car coming off the line. He's sorry he can't show us how taking



his hands off the steering wheel at 100 km/h is part of the test. Another day, perhaps.

It's the marriage of technology and craftsmanship that impresses most at Tahara, and our guide embodies it. I want to ask Suzuki how long he has been retired, for he doesn't speak like a retiree. He is embracing the new LS with the same intensity he must have shown that first generation model nearly 30 years ago.



## A COCKPIT WHERE DRIVERS CAN CONCENTRATE ON DRIVING

At the wheel of the new LS you will discover that a flagship luxury car can also be a driver's car. Slide into the driver's seat - it can be adjusted 28 different ways so you can achieve the perfect driving and seating position. The latter is low and inviting, giving you an ideal view of the road ahead. Take in the sculpted cockpit in which all distractions have been minimised so you can concentrate on driving. As you drive off and feel the car's agile responses and instant feedback, you begin to appreciate what our designers and ergonomists have achieved: an environment in which all the functions of the car can be accessed and controlled without you needing to change position or line of sight. It's effortless and intuitive. All the switches related to vehicle operation have been grouped around the steering wheel so that they are all within easy reach. Information displays are clustered at the same height so your eyes can instantly find them. Meanwhile, the high resolution Head-Up Display is safely bringing essential information to your attention. Shifting is sporty with paddle shift controls mounted on the steering column. The response is instant thanks to a 'shift-by-wire' design which makes a direct digital connection with the gearbox.



### HEAD-UP DISPLAY

Using technology first developed for jet fighter aircraft, the LS's high resolution colour Head-Up Display is positioned unobtrusively in your field of vision and projects key information onto the windscreen. At 24 inches this is the largest in the world, and it creates an image so crisp and sharp you'll have no problem viewing the data, even in the very brightest sunlight.



### 12.3" MULTIMEDIA DISPLAY

Perfectly positioned for a relaxing drive, the LS's large 12.3-inch multimedia display can be operated by voice command or an intuitive new Touch Pad designed to mimic smartphone operation. Its split-screen capability allows you to simultaneously access information, such as Lexus Premium Navigation and climate data or enjoy the peerless concert hall sound of the 23-speaker Mark Levinson® QLI Reference Surround system.



### ANALOGUE CLOCK

The clock epitomises the spirit of the LS. Analogue, it is beautiful and delicate in design, executed with immense attention to detail and yet highly functional. To minimise the driver's eye movements, the clock is located on the driver's side of the display zone. The hands emit light for instant readability, and when the user approaches the vehicle the illumination of the clock automatically increases - another unobtrusive example of Japanese 'Omotenashi'.





## THE QUEST: THE GREATEST EVER COMBINATION OF AGILITY AND COMFORT



Toshio Asahi has the perfect job for a man who has always loved cars. He's Chief Engineer for the new Lexus flagship, the LS. He describes himself as someone who never compromises, someone who keeps on pushing until he gets to the bottom of things. Those are useful personality traits to have if you're setting out to build a car with the greatest ever combination of agility and comfort.

Today it's generally acknowledged that the original Lexus LS 400 was smoother, quieter and better built than any car before it. Though it was revolutionary at the time, that combination of attributes is no longer enough, says Toshio Asahi: "The landscape for the luxury car has evolved over the years. It's not sufficient just to offer tranquil perfection - people also want excitement and emotion."

This is why the creation of the new LS began with a new platform (it also underpins the breathtaking performance of the latest Lexus LC coupé). Its remarkable rigidity and low centre of gravity are ideal for a driver's car. Add to this a choice of two stunning powertrains with lightning-fast gear changes, and a state-of-the-art suspension controlled by the latest generation of Lexus's VDIM system,



and you can see that the LS is well placed to please the most enthusiastic driver. And, as Toshio is quick to point out, the low driving position of the LS really adds to the thrill of the experience.

Paradoxically, what's good for driving pleasure can also be good for ride comfort. A chassis with enhanced rigidity is more able to absorb road

irregularities, and that means better cornering at speed and better ride quality.

Toshio Asahi believes that creating the ultimate luxury sedan driving experience is as much an art as a science. Achieving the perfect balance between athleticism and comfort is about the orchestration of a multitude of different elements, and it comes

down to human judgment in the end. Success requires exhaustive testing, many months of long days on the track and on the road, and repeated fine tuning.

## THE SAFETY NET



Tokyo is one of the most challenging and complicated cities in the world in which to drive: indeed, the Japanese capital is said to be the world's most demanding urban environment for autonomous driving systems.

Nowhere better, then, to try out the new Lexus LS, whose array of sensing and safety technologies are at the vanguard of the Lexus mission to make traffic casualties a thing of the past.

To get a feel for this automotive safety challenge, I have agreed to be driven into the proverbial eye of the storm. With Lexus Chief Engineer Toshio Asahi at the wheel of the LS, we are heading towards Tokyo's famous Shibuya 'scramble' crossing, one of the busiest urban junctions in the world.

As we stop-start along the tree-lined avenues of Harajuku, there is a lot going on: red light runners, preoccupied pedestrians, lane hoppers, tailgaters, ditherers.

But so far so good, cocooned as we are in one of the safest cars ever built. The LS is equipped

with a safety package bristling with world-first technologies and purposely designed to prevent four of the most common accident types: rear-end collisions; lane departures; accidents at crossroads; and collisions involving pedestrians.

"Where we are now, the main dangers are drifting into another lane and not anticipating that the traffic ahead has slowed or stopped," Asahi explains. "So, if I start to drift out of lane, Lane Keeping Assist will activate a warning buzzer and give brief corrective steering input when necessary."

We're now in the heavier stuff, not far from the Shibuya intersection. "There is always the potential for danger at large junctions, so the LS has a sensor with a much broader detection range than current forward-facing sensors," he tells me. "Automatic braking and active steering combine to prevent collisions."

The car also features measures such as Road Sign Assist, which gathers information from road signs for the driver, Automatic High Beam, two-stage Adaptive High-beam System and Lexus CoDrive,

which maintains steering control by sensing the driver's intention - particularly helpful when cornering or driving on motorways.

We have come to the belly of the beast. As we roll up to Shibuya junction, the lights turn red and we are in prime position to witness the 'scramble'. Three, two, one and hundreds of pedestrians suddenly surge into the intersection, either on the main diagonal criss-cross or one of the four perimeter crossings. Phones are out, heads are down.

"The system uses millimetre-wave radar combined with a stereo camera to sense any pedestrians appearing suddenly in front of the car," Asahi explains. "The driver gets a visible warning in the Head-Up Display and can take appropriate action to avoid an impact."

The last of the stragglers are scuttling to safety as we move forward. Somewhere behind us, a horn blows followed by another and another. Something's happened. The noise recedes as we accelerate away from the junction, safely.

## LEXUS SAFETY SYSTEM + A

Benefitting from our lead in accident prevention research, all LS models are fitted with Lexus Safety System + as standard. This includes a Pre-Collision System with pedestrian detection; Lane Keeping Assist with Sway Warning function to help you stay on course; Automatic High Beam for improved vision at night; Road Sign Assist that recognises traffic signs and Dynamic Radar Cruise Control, which regulates your speed to that of the vehicle in front.

For even more advanced driving support the optional Lexus Safety System + A is available. Beyond the features included in the Lexus Safety System + it offers: a Pre-Collision System with pedestrian detection and Active Steering Assist, Front Cross Traffic Alert, Lexus CoDrive and Adaptive High-beam System.

### LEXUS SAFETY SYSTEM + A PRE-COLLISION SYSTEM

Pre-Collision System\* on Lexus Safety System + A offers advanced driver assistance. It helps the driver avoid various types of collisions as well as mitigating injury and damage in the event of an accident. If millimetre-wave radar and a stereo camera detect a vehicle or pedestrian/bicycle rider on the road ahead, when the collision risk is high, the driver is alerted and LS 500h brake pressure is increased. In case the driver does not operate the brakes, Pre-Collision Brake is activated automatically and the front seatbelts are tightened. When there is a possibility of a collision with a structure such as guardrails or even pedestrians in the lane ahead - and if the Pre-Collision System determines that it is difficult to avoid a collision with brake control alone - Active Steering Assist provides steering control to supplement the braking operation.



### LEXUS CODRIVE

By smoothly integrating a number of different systems Lexus CoDrive gives the driver support in situations that are potentially tiring and stressful - such as in traffic jams or on roads with many curves. The functions controlled by Lexus CoDrive are: Dynamic Radar Cruise Control including indicator-linked control (for smooth overtaking while operating with cruise control) and Lane Tracing Assist.

### FRONT CROSS TRAFFIC ALERT

This system helps to make driving safer at road junctions by detecting approaching vehicles from the left or right in front of your vehicle which may be hidden in blind spots and alerting the driver via the Head-Up Display and the 12.3-inch multimedia display.

\* Please note that Pre-Collision System may in some cases not operate properly due to a variety of road conditions, vehicle conditions, weather conditions, operation by the driver or pedestrian/bicycle rider conditions. The driver is solely responsible for safe driving. Please enquire at your local dealer for details on the availability of features.

Under no circumstances should Lexus Safety System + or Lexus Safety System + A be used to replace your driving skills at the wheel. Please read the instructions very carefully before operating the system and remember the driver is always responsible for safety.

Lexus Safety System + A is not available in some markets.

## SELECT



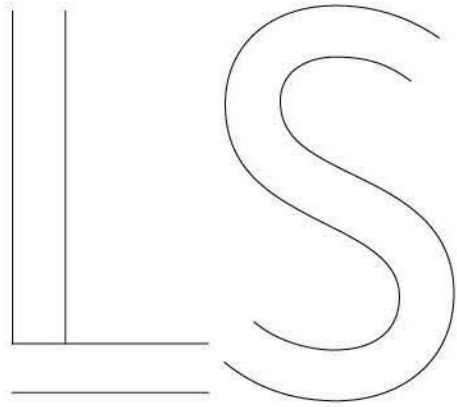
In this brochure we invite you to experience the pleasure of choosing your new Lexus LS. Standing at the pinnacle of the Lexus range, this flagship car combines the spaciousness of a long wheelbase four-door sedan with the seductive appeal of a low, coupé-like profile.

Inside you'll discover an interior that is distinguished by refined Japanese aesthetics, exquisite craftsmanship and imaginative technology. Wherever you are seated, you can enjoy supreme comfort provided by seats with multiple power adjustment, heating, cooling and massage functions. There is also, standard on luxury grade, a rear seat that includes an extending leg and over one metre of legroom.

The low driving position and driver-focused cockpit of the LS have been conceived to make driving a truly rewarding experience.

Thanks to a new platform, the car has outstanding handling agility, blended with superb ride comfort and refinement. The LS is available as the twin turbo V6-powered LS 500 or the LS 500h Multi Stage Hybrid - a breakthrough technology that transforms the Lexus Self-Charging Hybrid powertrain performance.

For an even more dynamic luxury experience, you can choose the new LS F SPORT featuring an exclusive L-mesh grille, F SPORT interior and distinctive new wheels.



LS 500 | LS 500h



**01. MODELS**

Choose the dynamic LS 500 or the breakthrough LS 500h Multi Stage Hybrid.

Pages 26-31



**02. GRADES**

What kind of LS best fits your taste and lifestyle? Select from Comfort, Executive, F SPORT and Luxury grades.

Pages 32-33



**03. FEATURES**

Discover the extraordinary level of standard and optional features available for your new LS luxury sedan.

Pages 34-37



**04. TECHNOLOGY**

Learn more about state-of-the-art LS technologies such as Lexus Safety System + A, Head-Up Display and Mark Levinson® with Quantum Logic Immersion.

Pages 38-42



**05. ACCESSORIES**

Browse our exclusive range of LS accessories.

Page 43



**06. F SPORT**

For an even more dynamic experience, discover the LS F SPORT.

Pages 44-45



**07. COLOURS**

Select the exterior colour to match your taste, and a 'Takumi'-crafted interior that will make every journey a pleasure.

Pages 46-51



**08. EQUIPMENT**

The LS comes with a wide range of equipment as standard. Learn about the extras you can add to personalise your car.

Pages 52-55



**09. TECHNICAL DATA**

Study all the key LS 500 and LS 500h technical data before ordering your new LS luxury sedan.

Pages 56-57

# THE LS 500

The LS 500 is powered by a superbly dynamic new 3.5-litre V6 turbocharged petrol engine. Combined with a newly developed 10-speed gearbox, it provides excellent acceleration and responsiveness with low fuel consumption and outstanding thermal efficiency. The LS 500 is equipped with All-Wheel Drive transmission.



Stunning Graphite Black bodywork,  
20" cast alloy wheels.



# THE LS 500h

Powered by latest-generation Lexus Multi Stage Hybrid, the new LS 500h revolutionises the way hybrids perform. By adding a multi-stage shift device to its 3.5-litre V6 full hybrid powertrain, our engineers have created a breakthrough car that offers incredible linear acceleration, flexible power and addictive 10-speed shifts using 'M' mode - yet with all the smoothness and efficiency of a Lexus hybrid. The LS 500h is available with a choice of either Rear-Wheel Drive or All-Wheel Drive.



Stunning Sonic Silver bodywork,  
20" cast alloy wheels.



### V6 ENGINE

At the heart of the LS 500 is a remarkable new 3.5-litre V6 twin turbo petrol engine. Providing quiet and refined performance befitting a flagship luxury sedan, this engine also effortlessly delivers powerful and exhilarating acceleration. The response to the accelerator is immediate, due to the flat torque characteristics of the twin turbochargers, and fuel economy is excellent due to top-class thermal efficiency.

### 10-SPEED TRANSMISSION

Another Lexus world first, the LS 500's 10-speed automatic transmission provides astonishingly quick gearshifts. For a crisp, smooth and rhythmic drive, it uses AI-SHIFT control that actually selects the optimum gear according to the driver's preferences and intentions, based not just on vehicle speed, but also on past driving style.



#### LEXUS MULTI STAGE HYBRID

The LS 500h features the world's first Multi Stage Hybrid system - which seamlessly combines the power of a 3.5-litre V6 dual VVT-i petrol engine and an advanced electric motor - with output amplified by a pioneering four-stage shift device. This responds instantly to the accelerator pedal with dynamic performance, while maintaining the smoothness and efficiency that are characteristics of Lexus hybrids.

#### LITHIUM-ION HYBRID BATTERY

The LS 500h uses a compact, lightweight lithium-ion hybrid battery. Smaller than conventional nickel-metal hydride units, it fits neatly between the LS's rear seats and the luggage compartment. Although small, it has a high power density, with its 84 cells producing 310.8 volts. Using lithium-ion technology has also reduced the battery's weight, helping lower the LS 500h's overall mass while improving its dynamic handling and performance.

## EXPERIENCE LEXUS HYBRID DRIVE



### START UP, DRIVING OFF

When starting off, the electric motor can propel the LS 500h up to 140 km/h (Rear-Wheel Drive) or 129 km/h (All-Wheel Drive), with electric power being supplied from the hybrid battery. At this point the vehicle is almost silent, uses no petrol and produces zero emissions.

### NORMAL DRIVING CONDITIONS

At speeds above 140 km/h (Rear-Wheel Drive) or 129 km/h (All-Wheel Drive) the advanced petrol engine cuts in quietly, but still receives assistance from the electric motor when required. Through the near perfect distribution of its dual power sources, the LS 500h provides exceptional driving comfort - together with lower emissions and fuel consumption.



#### **FULL THROTTLE ACCELERATION**

Accelerate powerfully and the 179 DIN hp electric motor instantaneously supplements the 3.5-litre petrol engine. This delivers a surge of torque to provide powerful linear acceleration precisely when you need it.

#### **DECELERATION, STOPPING, BRAKING**

When decelerating or coming to a halt, the petrol engine turns off, cutting emissions to zero. Brake, or take your foot off the accelerator, and regenerative braking harnesses the kinetic energy lost in other cars. It converts this into electrical energy for storage in the hybrid battery, which is one reason why you never need to recharge a Lexus Full Hybrid.

GRADES





19" cast alloy wheels, machined finish  
 'Spindle grille', elaborate mesh design  
 Adaptive Variable Suspension  
 Lexus Safety System +

## COMFORT

As you'd expect from Lexus, this package has a substantial level of standard equipment:

Smooth leather upholstery  
 12-speaker Pioneer® audio system  
 12.3" multimedia display, Touch Pad operation  
 Lexus Premium Navigation



20" cast alloy wheels, multi-spoke design  
 Air suspension  
 Semi-aniline leather upholstery

## EXECUTIVE

The LS Executive is for those who wish to combine exceptional looks and comfort.

Front massage seats  
 3-spoke, leather and wood trimmed steering wheel



20" cast alloy wheels, F SPORT design  
 'Spindle grille', L-mesh design  
 Front and rear, F SPORT design  
 F SPORT leather upholstery

## F SPORT

For those in search of a more dynamic look, the F SPORT grade offers features like an exclusive 'spindle grille' and F SPORT wheels.

Front seats, F SPORT design  
 Machined aluminium sports pedals  
 F SPORT steering wheel and gearshift lever



20" cast alloy wheels, multi-spoke design  
 Semi-aniline leather upholstery  
 Rear massage seats

## LUXURY

The LS Luxury has been created for those who demand the ultimate in comfort and relaxation.

Rear relaxation seat (passenger's side)  
 23-speaker Mark Levinson® Reference Surround  
 Rear Seat Entertainment system



01

**01. 19" CAST ALLOY WHEELS**

Featuring a two-tone colour scheme that combines a machined finish with a medium-grey metallic coating. A flat rim has been used to improve aerodynamic performance.



02

**02. 19" CAST ALLOY WHEELS**

This wheel displays a hyper-chrome metallic coating to boost the dynamic presence of the LS.



03

**03. 20" CAST ALLOY WHEELS**

Enhancing the car's powerful presence, this 20" wheel features an exquisitely crafted surface finish.



04

**04. 20" FORGED ALLOY WHEELS**

This wheel is fully polished across its entire surface. The 10-blade design expresses the car's sporting character, while also helping to reduce weight.

**05. SPINDLE GRILLE**

The front of the new Lexus flagship sedan is distinguished by a bold new execution of the Lexus 'spindle grille', featuring an elaborate mesh pattern. This striking design was developed over a period of several months by Lexus 'Takumi' craftspeople using sophisticated computer modelling.

**06. TRIPLE LED HEADLIGHTS**

The elegant headlights of the LS consist of three ultra-small LED units. These deliver exceptional light distribution. The headlights are equipped with sequential turn signal indicators. These come equipped with multi-weather lights to help maintain a good field of view in foggy driving conditions.

**07. LED REAR COMBINATION LIGHTS**

The rear combination lights of the LS are formed of LEDs. They give the car an instantly recognisable visual signature with crystal-like linear illumination.

**08. SUNROOF**

An electric, tilt and slide, glass sunroof adds a feeling of freedom, spaciousness and light to the LS cabin.

**09. HANDS-FREE POWER BOOT LID**

For convenient loading and unloading the LS is available with a hands-free power boot lid. This can be opened and closed by moving your foot in front of a sensor located underneath the rear bumper while you are carrying the smart key.





05



06



07



08



09



01



02



03



04



05



06

### 01. DRIVER-FOCUSED COCKPIT

To reduce eye movement and potential distraction, all important instruments and displays are positioned close to your view of the road ahead. The controls you use frequently, such as Drive Mode Select, are concentrated around the steering wheel. Our designers have also thought carefully about the sequence in which controls are typically used so that you can operate the car seamlessly with no wasted movement.

### 02. S-FLOW CLIMATE CONTROL / CLIMATE CONCIERGE

S-Flow Climate Control intelligently manages the interior climate according to ambient conditions, ensuring excellent comfort and fuel economy. It can, for example, detect if seats are occupied, and regulate the climate accordingly. Just one touch is all it takes to orchestrate a pleasant environment inside the car.

### 03. LEATHER STEERING WHEEL / LEATHER AND WOOD STEERING WHEEL

The three-spoke steering wheel is covered in leather and fits snugly and comfortably in your hands. It is available with heating for colder mornings. Integrated switches control audio, telephone, multi-information display, Dynamic Radar Cruise Control, Lane Keeping Assist and Lane Tracing Assist. A leather and wood steering wheel that combines real leather with beautiful inlays of finely grained wood is available. As your fingers enjoy the feel of real leather and wood, your eyes will love the elegance of the design.

### 04. LEATHER SEATS

The leather seats of the LS are an outstanding example of the highest levels of Japanese 'Takumi' craftsmanship. The leather is of impeccable quality and the stitching is executed with immense precision. Three grades of leather are available: smooth, semi-aniline and, at the pinnacle, L-aniline. Only the top 1% of carefully selected hides meet the quality standards of L-aniline and they undergo a special tanning process to ensure maximum softness. The result is seats of exceptional beauty and comfort.

### 05. HAND-PLEATED DOOR PANELS

Exclusive to the LS, hand-pleated door panels are an intriguingly beautiful and dramatic example of Japanese craftsmanship using a delicately precise folding technique similar to that of origami.

### 06. PREMIUM ACCESS

The LS is available with a system that automatically raises the driver's seat to make it easier to step in/out of the car. When entering the car the driver's seat is lowered before returning to the previous driving position. Also available is a system that lowers the side support of seats to make it easier to get in and out of the car. Once the occupant is in place, the cushion automatically returns to its normal position to support the thighs.

**07. FRONT SEAT ADJUSTMENT**

Using a sophisticated combination of electric motors and pneumatics, the front seats allow up to 28 different adjustments, enabling the driver and front passenger to experience perfect comfort while travelling in the LS.

**08. FRONT MASSAGE SEATS**

The LS is available with front seats that provide occupants with a relaxing massage. You can select from a total of five different programmes that target specific areas of the body. These have been developed in consultation with an expert in the Japanese technique of shiatsu massage.

**09. HEATED AND VENTILATED SEATS**

For the driver and passengers' comfort, heated and ventilated seats are available. This adds to the sense of luxury, especially in extreme weather conditions.

**10. REAR SEAT ADJUSTMENT / OTTOMAN**

Behind the front seat passenger, a power rear relaxation seat with ottoman foot rest is available. This seat provides the ultimate in relaxation, enabling occupants to enjoy a spacious ride with the optimum angle of recline and the maximum level of comfort. Thanks to a combination of electric motors and pneumatics, 22 different adjustments are possible. When occupants wish to exit the car the seats automatically return to an upright position.

**11. REAR MASSAGE SEATS**

The LS is equipped with seats that combine massage with warming. Occupants can choose from a total of seven different programmes, enabling them to select a balance of massage and heat that's precisely to their liking.

**12. REAR MULTI-OPERATION PANEL**

This touch panel display allows passengers to configure the rear climate zones, adjust the audio and operate the rear blind.

**13. REAR SUNSHADES**

To enhance comfort in hot weather a power rear sunshade is available. This shades the whole rear area from sunlight. Rear passengers can alter the shade for the rear, door and rear quarter windows.



07



08



09



10



11



12



13



01



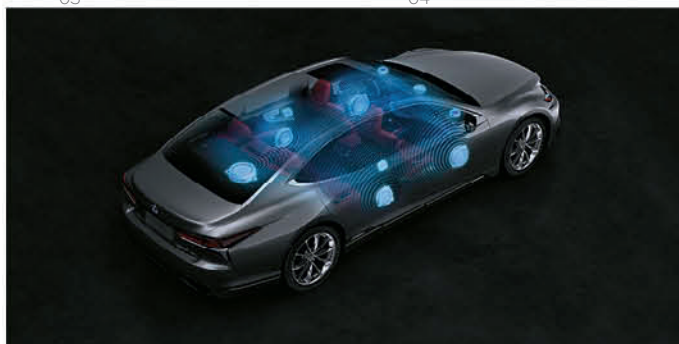
02



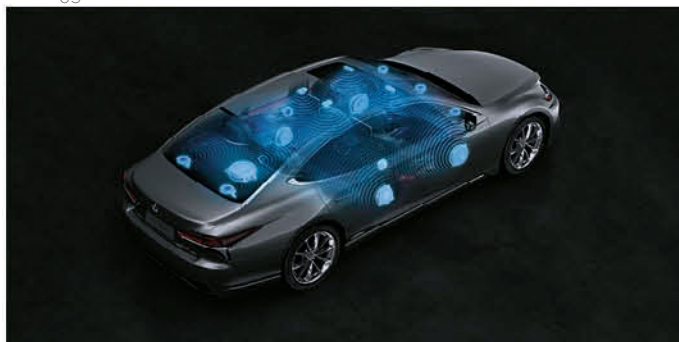
03



04



05



06



07



08

**01. OPTITRON INSTRUMENTATION**

The LS cockpit features optitron instrumentation and an 8-inch TFT LCD-screen that provides a range of data with great clarity, as well as elegant animations when you enter and start up the car.

**02. 12.3" LEXUS PREMIUM NAVIGATION**

Lexus Premium Navigation is provided via a 12.3-inch wide display. With vivid 3D graphics and many mapping options, the system can even generate a QR code for your smartphone when you are parked to help you reach your final destination on foot.

**03. TOUCH PAD**

The 12.3-inch screen is operated by Touch Pad or voice commands. The Touch Pad interface has been designed to give you the intuitive feel of a smartphone, using operations such as double tapping and flicking.

**04. HEAD-UP DISPLAY**

Vehicle data is projected in colour directly onto the windscreen. The Head-Up Display, which is particularly large in the LS for excellent readability, lets you check data like navigation commands, audio settings or safety features without taking your eyes off the road ahead.

**05. 12-SPEAKER PIONEER® AUDIO**

Producing incredibly pure sound, a 12-speaker Pioneer® audio system (with subwoofer) is available. This features an AM/ FM RDS tuner, CD player and Bluetooth® connectivity.

**06. MARK LEVINSON® SURROUND SOUND**

The 23-speaker Mark Levinson® Reference Surround system is tailored to the specific acoustic properties of the LS cabin. It delivers a peerless 7.1-channel digital home-theatre experience.

**07. REAR SEAT ENTERTAINMENT**

The Rear Seat Entertainment is operated by the multi-operation panel in the rear and delivers an outstanding video experience via an 11.6-inch LCD screen. Playback from Blu-ray™ Disc and SD card, as well as WiFi. The armrest is also equipped with a headphone jack and HDMI port.

**08. PARKING SUPPORT BRAKE**

The Parking Support Brake helps the LS to avoid, in parking situations, minor collisions and damage during low-speed manoeuvres. The system monitors the area at the front and rear of the car and if it judges there is a possibility of contact with a static object, a vehicle approaching from the rear or a rear pedestrian, the system can apply drive force and brake control.

**01. LEXUS SAFETY SYSTEM +**

Breakthrough Lexus Safety System + is standard on the new LS and includes:

- Pre-Collision System with pedestrian detection
- Dynamic Radar Cruise Control
- Lane Keeping Assist
- Road Sign Assist
- Automatic High Beam

**02. LEXUS SAFETY SYSTEM + A**

For advanced support, Lexus Safety System + A offers additional features beyond those included in Lexus Safety System +:

- Pre-Collision System with pedestrian alert
- Pre-Collision System with Active Steering Assist
- Front Cross Traffic Alert
- Lexus CoDrive
- Adaptive High-beam System

**03. PRE-COLLISION SYSTEM WITH ACTIVE STEERING ASSIST**

A world first Lexus technology, Pre-Collision System\* with Active Steering Assist determines when there is a high possibility of collision with a pedestrian ahead or with an object such as a guardrail. If the system also determines that it is difficult to avoid the collision with brake control alone - but that it might be avoided using steering control - the system assists in collision prevention or damage reduction using Active Steering Assist in addition to activating an alert and applying the brakes.

**04. UP TO TWELVE AIRBAGS**

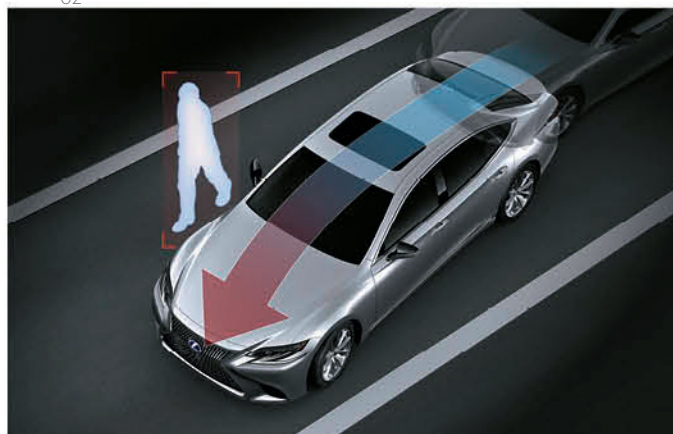
The LS is equipped with up to twelve airbags. In a collision, a depression is formed in the centre of the passenger front airbag to cradle delicate areas such as the nose and mouth. The optional rear power seats come with seat cushion airbags.



01



02



03



04

\* Please note that Pre-Collision System may in some cases not operate properly due to a variety of road conditions, vehicle conditions, weather conditions, operation by the driver or pedestrian/bicycle rider conditions. The driver is solely responsible for safe driving. Please enquire at your local dealer for details on the availability of features.



01

### 01. DYNAMIC RADAR CRUISE CONTROL

For a more relaxing drive, Dynamic Radar Cruise Control maintains a set distance between the LS and the vehicle ahead, even if that vehicle varies its speed. Steering wheel-mounted switches allow you to operate the system without taking your hands off the wheel.



02



03

### 02. ROAD SIGN ASSIST

The Road Sign Assist (RSA) system on the new LS recognises traffic signs using the windscreen mounted camera, and provides information to the driver in the multi-information display. RSA can detect signs that are compliant with the Vienna Convention (including electroluminescent and flashing signs).

### 03. LANE KEEPING ASSIST

Lane Keeping Assist (LKA) uses a camera in the front windscreen to continuously monitor your position in lane. If you start drifting out of lane, LKA will activate a warning buzzer and give brief corrective steering input.

### 04. AUTOMATIC HIGH BEAM / ADAPTIVE HIGH-BEAM SYSTEM

At night, Automatic High Beam uses the same front recognition camera as Lane Keeping Assist to detect oncoming vehicles and automatically dip the high beam headlights. This reduces the chance of accidentally dazzling other drivers and lets you concentrate on the road ahead.

Available as an option, the Adaptive High-beam System makes driving at night less tiring by automatically controlling the operation of high beam. It uses the front recognition camera located on top of the vehicle to detect light from vehicles in front and automatically optimises the light distribution so that the high beams do not dazzle other drivers. The two-stage system developed for the LS delivers light in an extremely precise way. This allows a higher frequency of high-beam driving without blinding preceding or oncoming vehicles, thus improving visibility and safety at night.



04

### 05. TYRE PRESSURE WARNING SYSTEM

Receiving data from a sensor installed in each tyre, the multi-information display tracks tyre pressure data and warns accordingly should pressure drop in one of them. The system can reduce the risk of a puncture, while helping to improve fuel economy and tyre life.



05

### 06. FRONT CROSS TRAFFIC ALERT

The system assists in making driving safer at road intersections by detecting approaching vehicles from the left or right of your vehicle which might be hidden in blind spots, warning the driver via the Head-Up Display and the 12.3-inch display.



06

### 07. PARKING SUPPORT ALERT

Giving great confidence when parking at close quarters, Parking Support Alert gives warning of collision using clearance sonar, Rear Cross Traffic Alert and a display in the rear camera.

### 08. REAR CROSS TRAFFIC ALERT AND BRAKING

Rear Cross Traffic Alert is a function to alert for rear approaching vehicles. It helps the LS to avoid, in parking situations, minor collisions and damage during low-speed driving. The system monitors the area at the rear of the LS and if it judges there is a possibility of contact with a vehicle approaching from the rear, it can adjust driving force and brake control. When necessary, the system alerts you with a buzzer and a visual display in the 12.3-inch display and relevant door mirrors.

### 09. BLIND SPOT MONITOR

Radar devices mounted in the rear bumper detect vehicles in adjacent lanes that are not visible in the door mirrors up to 60 metres behind your LS. If the driver is indicating to change lane and a vehicle enters the blind spot, a warning signal appears in the relevant door mirror.

### 10. LEXUS PARKING ASSIST MONITOR / PANORAMIC VIEW MONITOR

The Lexus parking assist monitor\* helps you reverse into parking spaces. On the 12.3-inch display it shows a video image of the space into which you are reversing, and overlays guidelines to facilitate you steering the car.

For easier driving in confined spaces, Panoramic View Monitor provides a near-360° view around the entire vehicle. It also creates a virtual 3D picture of your LS, showing the vehicle as if seen from above, with on-screen guides to assist close-quarter manoeuvring in the city. Cornering View - another Lexus world first - helps the driver to avoid mounting the curb when turning left or right.

### 11. LEXUS CODRIVE

Lexus CoDrive is a technology that anticipates the arrival of autonomous driving. It smoothly integrates a number of systems to provide a greater degree of assistance to the driver. The functions controlled by Lexus CoDrive are:

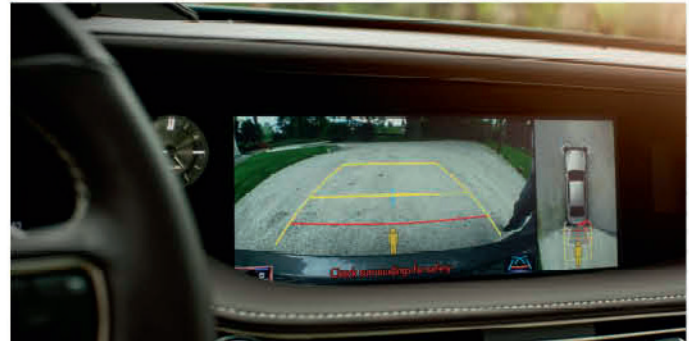
- Dynamic Radar Cruise Control (DRCC), which maintains the car at a constant cruising speed, and uses acceleration and braking to maintain a fixed distance from the vehicle ahead. In addition, DRCC can adjust speed to the road sign speed limits using Road Sign Assist. Indicator-linked control provides for smooth overtaking while operating with cruise control. When the car is operating under cruise control and the indicator-linked control is operated to signal the intention to overtake a slower car, the system automatically accelerates the LS.
- Lane Tracing Assist supports steering even in traffic congestion on roads with frequent curves.



07/08



09



10



11

\* People and obstacles that show in the monitor differ from the actual position and distance. Do not rely completely on the monitor and make sure you check the safety around the vehicle with your own eyes when driving.



01

**01. HIGH RIGIDITY / LIGHTWEIGHT BODY**

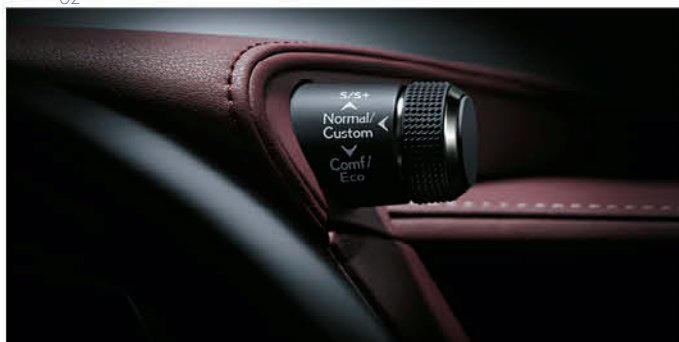
The LS has an extremely rigid body in order to deliver a ride that is particularly refined and stable. The extensive use of lightweight materials, such as aluminium, and advanced bonding techniques have helped minimise weight in order to improve fuel economy.



02

**02. AERODYNAMICS**

The LS has excellent aerodynamics, which not only contribute to good fuel economy but also reduce wind noise and turbulence, helping to ensure that travelling in the LS is always a highly refined experience, even at high speeds.



03

**03. DRIVE MODE SELECT**

Located beside the steering wheel, Drive Mode Select lets you shift effortlessly between different drive modes according to your mood and prevailing conditions. Choose between Comfort / Eco, Normal / Custom, Sport S / Sport S+ modes.



04

**04. ADAPTIVE VARIABLE SUSPENSION / AIR SUSPENSION**

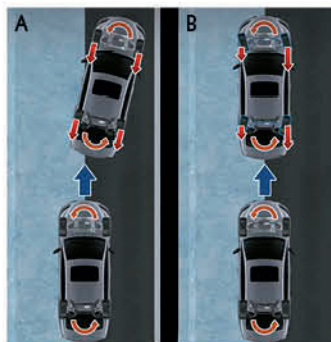
To ensure an even more comfortable drive, standard Adaptive Variable Suspension intelligently controls the damping force on all four wheels. This not only improves ride comfort, but also increases handling stability. It is especially valuable when travelling on rough or undulating road surfaces. Electronically controlled air suspension is available. This uses an air spring construction to smoothly deflect shocks from the road surface, providing an even more comfortable ride. With air suspension, the LS will automatically raise the vehicle height to make it easier to get in and out of the car.



05

**05. LEXUS DYNAMIC HANDLING**

Lexus Dynamic Handling computes the optimum steering angles for all four wheels, to ensure a good response to the driver's steering inputs - and stable vehicle behaviour.



06

**06. VEHICLE DYNAMICS INTEGRATED MANAGEMENT**

State-of-the-art Vehicle Dynamics Integrated Management is fitted as standard to the LS. This enables all of the car's stability and control systems to work together, ensuring a level of intervention that is much more refined than if these systems acted independently of one another.

A. Without VDIM. Dynamic control systems work independently.  
B. With VDIM. Dynamic control systems work smoothly together.



## ACCESSORIES

### 01. 19" ALLOY WHEEL

The LS's powerful sports performance was the primary visual influence in the design of the multiple spoke 19" alloy wheels. They are available for both petrol and hybrid cars.

### 02. TEXTILE FLOOR MATS (3 COLOUR VERSIONS)

Luxurious yet protective textile floor mats. Made of sound-absorbing acuvellour, they are shaped for a perfect fit. The driver's mat has a special fixing to prevent slippage during use.

### 03. RUBBER FLOOR MATS

Genuine, tailored-fit rubber floor mats help protect your carpets against the very worst conditions. They are impervious to dirt, mud and water and can be removed for easy cleaning.

### 04. REAR BUMPER PROTECTION PLATE (STAINLESS STEEL)

Designed to protect the rear bumper paintwork against scratching when sliding heavy or awkward loads into the boot. It is also particularly effective for guarding the paintwork of the boot area and adds a styling element to the rear bumper.

### 05. BOOT LINER

Tailored to fit the boot of your vehicle and provide protection against dirt and spills. The design features a special anti-slip surface pattern to help stop luggage moving.



01



02



03



04



05

## F SPORT



01



02

### 01. F SPORT BADGE

Although discreet, the F SPORT logo is a badge of distinction. It reflects the car's motorsport-inspired design influences and hints at a lineage that is shared - in part - with the Lexus LFA V10 supercar.

### 02. 20" F SPORT ALLOYS

This wheel expresses high performance and enhances the LS's dynamic and powerful stance. The wheel features a dark premium metallic coating with a black centre cap.

### 03. F SPORT EXCLUSIVE BRAKE CALLIPERS

The dynamic prowess of the LS is highlighted by these black painted callipers proudly bearing the Lexus logo.

### 04. F SPORT L-MESH GRILLE

The exclusive F SPORT grille design sets this car apart. Finished in black, the complex mesh required more than six months of intensive computer modelling to design. Look carefully and you will see it is formed of thousands of L-shaped design elements.

### 05. F SPORT EXCLUSIVE SURFACE TREATMENT

Exclusive Jet Black plating has been applied to certain parts of the exterior to enhance the sporting appearance of the car.



03



04



05

**06. F SPORT LEATHER**

These unique F SPORT seats have the F SPORT emblem embossed in the headrest and are decorated with an exclusive L-shaped perforation pattern.

**07. F SPORT STEERING WHEEL AND GEARSHIFT LEVER**

Finished in perforated leather, the F SPORT gearshift design matches the steering wheel to create a thrilling sports look.

**08. MACHINED SPORTS PEDALS**

Machined sports pedals help dial up the sporting excitement and improve your contact with the LS F SPORT.

**09. CLOCK WITH L-MOTIF**

The face of the exclusive F SPORT clock has a unique L-shaped pattern.

**10. F SPORT INSTRUMENTATION**

Inspired by the instruments on the LFA supercar, a movable meter ring allows the driver to change the information that is being displayed, enabling a single meter to be used for multiple information, thus reducing unnecessary eye-movement. This feature is exclusive to the LS F SPORT.



06



07



08



09



10

---

## DEVELOPING A NEW LEXUS PAINT COLOUR IS BOTH COMPLEX AND TIME CONSUMING

---



Lexus designers never use off-the-shelf colours, preferring instead to develop their own, from scratch, a process that can take up to two years. The Lexus paint palette totals some 30 different colours including metallic finishes like Sonic White and Sonic Titanium.

There are no shortcuts to creating a new Lexus colour: A designer's decision comes only after going through hundreds of samples. "When developing a new colour I see so many shades of paint that I sometimes can't see straight at the end of the day," says Megumi Suzuki, one of Lexus' most experienced colour designers. To do her job, it takes a grasp of chromogenics and a keen eye.

"Every time I meet someone or walk into a shop or go to someone's house, I check out colours and materials," she says. "There are a lot of people like me in our division."

Even after a colour has been decided upon, there's plenty to do. At various stages during development, Suzuki had to enlist a small army of experts: Lab technicians who mix the paint, clay sculptors, engineers and the assembly-line paint shop crew who would give each car a flawless, uniform coat. Every few weeks Kansai Paint (a Lexus paint supplier) produces a new batch, and Lexus designers give the samples a thorough look-over, bending the test panels to mimic the contours of a car. All are scrutinised indoors and outdoors, under floodlights, in sunlight, shade and overcast conditions, and at different times of the day and months of the year.

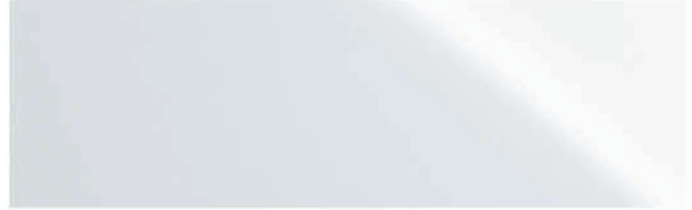
Selecting the final colour is not easy. A colour that is dazzling on a summer morning can appear sickly in the shade or under showroom lamps. Designers also have to contend with the vagaries of their own preferences. "The odd thing about colour is that your perception of it can change depending on the season, how you feel that day and the trends you're seeing," says Suzuki.

COLOURS | EXTERIOR

F WHITE | 083<sup>1</sup>



SONIC WHITE | 085<sup>2</sup>



SONIC SILVER | 1J2



SONIC TITANIUM | 1J7



BLACK | 2I2<sup>3</sup>



GRAPHITE BLACK | 223



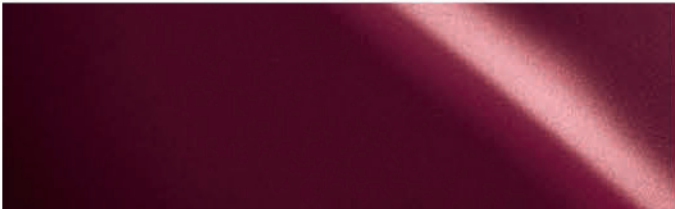
MANGANESE LUSTER | 1K2



MORELLO RED | 3R1



SONIC AGATE | 3U3



SAND ECRU | 4U7<sup>2</sup>



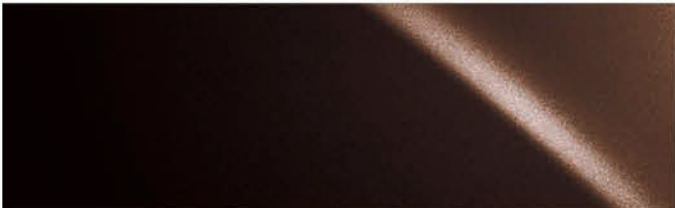
SAPPHIRE BLUE | 8X1<sup>1</sup>



DEEP BLUE | 8X5



COPPER BROWN | 4X2<sup>2</sup>



<sup>1</sup> Exclusive on F SPORT.  
<sup>2</sup> Not available on F SPORT.  
<sup>3</sup> Solid colour

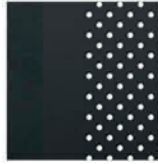
Please note: due to printing variances, actual paintwork colours may vary slightly from those illustrated.

**SMOOTH LEATHER<sup>1</sup>**



Black

**F SPORT LEATHER<sup>2</sup>**



Galaxy Black



Flare Red



F White

**SEMI-ANILINE LEATHER<sup>3</sup>**



Black



Ivory



Topaz Brown



Noble Brown

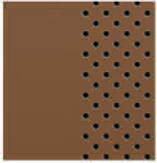


L White

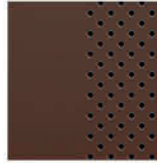


Crimson & Black

**L-ANILINE LEATHER<sup>4</sup>**



Camel



Saddle Tan

**INLAYS<sup>5</sup>**



Laser Cut  
Dark Wood



Black,  
Shimamoku



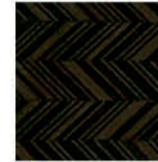
Walnut



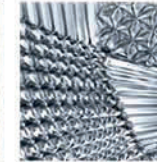
Open Pore  
Walnut



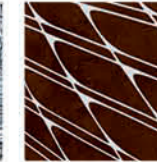
Art Wood  
Organic



Art Wood  
Herringbone



Kiriko Glass



Laser Cut Special  
Open Pore

**F SPORT INLAY<sup>6</sup>**



Naguri-Style  
Aluminium

<sup>1</sup> Smooth leather is standard on Comfort grade.

<sup>2</sup> F SPORT leather is standard on F SPORT.

<sup>3</sup> Semi-aniline leather is standard on Executive and Luxury grades.

<sup>4</sup> L-aniline leather is available as part of the L-aniline leather plus pack on Luxury grade.

<sup>5</sup> Laser Cut Dark Wood inlays are standard on Comfort and Executive grades. On Executive grade, Black Shimamoku, Walnut or Open Pore Walnut are additionally available as standard. Walnut inlays are specified as standard on Luxury grade, while Laser Cut Dark Wood or Open Pore Walnut are available as part of the L-aniline leather plus pack. Art Wood Organic or Herringbone inlays are optional on Executive and Luxury grades. Art Wood Herringbone or Laser Cut Special Open Pore are available as part of the L-aniline leather plus pack with Art Wood inlays on Luxury grade. Kiriko Glass inlays are available as an option or part of the Crystal package on Luxury grade.

<sup>6</sup> Naguri-Style Aluminium inlays are standard on F SPORT.

Please note: not all interior combinations are available. The images on the following 3 pages illustrate a selection of the interior combinations available. Your Lexus Authorised Retailer will be pleased to provide you with any further help.



01



02



03



04

- 01 Black smooth leather with Laser Cut Dark Wood inlays (Comfort)
- 02 Galaxy Black F SPORT leather with Naguri-Style Aluminium inlays (F SPORT)
- 03 Flare Red F SPORT leather with Naguri-Style Aluminium inlays (F SPORT)
- 04 F White F SPORT leather with Naguri-Style Aluminium inlays (F SPORT)



05



06



07



08

- 05 Black semi-aniline leather with Black Shimamoku inlays (Executive)
- 06 Ivory semi-aniline leather with Walnut inlays (Executive)
- 07 Topaz Brown semi-aniline leather with Open Pore Walnut inlays (Executive)
- 08 Noble Brown semi-aniline leather with Laser Cut Dark Wood inlays (Executive)





09



10



11



12

- 09 Crimson & Black semi-aniline leather with Kiriko Glass inlays (Luxury)
- 10 L White semi-aniline leather with Art Wood Organic inlays (Luxury)
- 11 Camel L-aniline leather with Laser Cut Special Open Pore inlays (Luxury)
- 12 Saddle Tan L-aniline leather with Art Wood Herringbone inlays (Luxury)

EXTERIOR	COMFORT	EXECUTIVE	F SPORT	LUXURY
Auto-levelling headlights	■	■	■	■
Automatic boot close (soft shut)	■	■	■	■
Black brake callipers with Lexus logo, front and rear	–	–	■	–
Cornering lights	■	■	■	■
Daytime Running Lights (DRL), LED	■	■	■	■
Door mirrors, electrically adjustable and folding, electro chromatic (auto-dimming), heated	■	■	■	■
Glass sunroof, electric tilt/slide	■	■	■	■
Hands-free boot closer	–	■	■	■
Headlight cleaners	■	■	■	■
Headlights, triple LED	■	■	■	■
Multi weather lights	■	■	■	■
Rain sensing windscreen wipers	■	■	■	■
Rear combination lights, LED	■	■	■	■
Rear spoiler	■ <sup>1</sup>	■ <sup>1</sup>	■ <sup>1</sup>	■ <sup>1</sup>
Rear spoiler, without	□ <sup>1</sup>	○ <sup>1</sup>	○ <sup>1</sup>	○ <sup>1</sup>
Sequential turn signal indicators	■	■	■	■
Spindle grille, elaborate mesh design	■	■	–	■
Spindle grille, L-mesh design	–	–	■	–
Ultra Violet (UV) and heat insulating tinted glass	■	■	■	■
<b>WHEELS</b>				
19" cast alloy wheels, machined finish, 245/50 R19 tyres	■ <sup>2</sup>	–	–	–
19" cast alloy wheels, 10-twin-spoke design, 245/50 R19 tyres	□ <sup>2</sup>	–	–	–
20" cast alloy wheels, multi-spoke design, 245/45 R20 tyres	□ <sup>2</sup>	■	–	■
20" cast alloy wheels, F SPORT design, 245/45 (front) and 275/40 (rear) R20 tyres	–	–	■	–
20" forged alloy wheels, blade-shape design, 245/45 R20 tyres	–	–	–	○
<b>ACTIVE SAFETY AND DRIVING DYNAMICS</b>				
Adaptive High-beam System (AHS)	○	○/□	○	○/□
Adaptive Variable Suspension (AVS)	■	■	■	■
Air suspension	–	■	■	■
Automatic High Beam (AHB)	■	–	■	–
Automatic Rear Flashing Hazard Lights (ARFHL)	■	■	■	■
Blind Spot Monitor (BSM)	■	■	■	■
Drive Mode Select, Comfort / Eco - Normal / Custom - Sport S / Sport S+	■	■	■	■
Dynamic Radar Cruise Control (DRCC), all-speed	■	■	■	■
Dynamic Rear Steering (DRS)	–	–	■ <sup>3</sup>	–
Electronic Power Steering (EPS)	■	■	■	■
Front Cross Traffic Alert (FCTA)	–	□ <sup>4</sup>	–	□ <sup>4</sup>
Hill-start Assist Control (HAC)	■	■	■	■
Lane Keeping Assist (LKA)	■	■	■	■
Lane Tracing Assist (LTA)	–	□ <sup>4</sup>	–	□ <sup>4</sup>
Parking Support Alert	■	■	■	■
Pre-Collision System (PCS)	■	■	■	■
Rear Cross Traffic Alert (RCTA)	■	■	■	■
Road Sign Assist (RSA)	■	■	■	■
Tyre Pressure Warning System (TPWS) with auto-location	■	■	■	■
Variable Gear Ratio Steering (VGRS)	–	–	■ <sup>3</sup>	–
Vehicle Dynamics Integrated Management (VDIM)	■	■	■	■

EQUIPMENT | GRADES

PASSIVE SAFETY	COMFORT	EXECUTIVE	F SPORT	LUXURY
Airbag cut-off switch, front passenger	■	■	■	■
Airbags, driver and front passenger; head, side and knee / full-length curtain shield	■	—	■	—
Airbags, driver and front passenger; head, side and knee / full-length curtain shield / rear cushion	—	■	—	■
Audible and visual front seatbelts reminder	■	■	■	■
ISOFIX attachment, outer rear seats	■	■	■	■
Pop Up Hood (PUH)	■	■	■	■
Seatbelt pre-tensioners, front and rear seats	■	■	■	■
<b>SECURITY</b>				
Anti-theft system – intrusion sensor / inclination sensor / siren / immobiliser	■	■	■	■
Auto door locking	■	■	■	■
Double door lock	■	■	■	■
Wireless door locking	■	■	■	■
<b>AUDIO, COMMUNICATION AND INFORMATION</b>				
2 headphone jacks and HDMI port	—	—	—	■
2 USB ports and AUX socket	■	■	■	■
8" colour multi-information display	■	■	■	■
12.3" multimedia display	■	■	■	■
12V socket x3	■	■	■	■
12-speaker Pioneer® audio system	■	■	■	—
23-speaker Mark Levinson® Reference Surround	—	○	○	■
Active Sound Control (ASC)	■	■	■	■
Analogue clock with GPS function	■	■	■	■
Head-Up Display (HUD)	○	○/□	○	○/□
Lexus parking assist monitor	■	—	—	—
Lexus Premium Navigation	■	■	■	■
Panoramic View Monitor (PVM)	—	■	■	■
Rear Seat Entertainment (RSE) system	—	—	—	■
Steering wheel mounted controls – audio / display / phone / voice / DRCC / LKA	■	■	■	■
Touch Pad operation for multimedia display	■	■	■	■

- Available as standard.
- Available as an option.
- Available as part of a pack.
- Not available.

<sup>1</sup> The LS 500 is equipped as standard without rear spoiler. The spoiler is available as an option.  
<sup>2</sup> The LS 500 Comfort grade is equipped with 20" cast alloy wheels as standard.  
<sup>3</sup> Only available on LS 500h Rear-Wheel Drive.  
<sup>4</sup> Only available on LS 500h.

INTERIOR COMFORT AND CONVENIENCE	COMFORT	EXECUTIVE	F SPORT	LUXURY
3-spoke, leather trimmed steering wheel with paddle shift controls	■	-	-	-
3-spoke, leather and wood trimmed steering wheel with paddle shift controls	-	■	-	■
3-spoke, perforated leather trimmed steering wheel with paddle shift controls	-	-	■	-
Card key	○	○	○	○
Door armrest and console box, L-aniline leather	-	-	-	□
Door armrest and console box, semi-aniline leather	-	■	-	■
Door armrest and console box, Tahara trim	■	-	■	-
Door panel finish, fabric	■	■	■	□
Door panel finish, hand-pleated fabric	-	-	-	□
Door panel finish, semi-aniline leather	-	○	-	■
Easy entry and exit facility	■	■	■	■
Electronic climate control, 2-zone with nanoe® technology	■	-	■	-
Electronic climate control, 4-zone with nanoe® technology	-	■	-	■
Front butterfly headrests, electrically adjustable	-	-	-	-
Front butterfly headrests, electrically adjustable and folding (passenger)	-	-	-	■
Front headrests, electrically adjustable	□	■	■	■
Front headrests, manually adjustable	■	-	-	-
Front refresh seats	-	■	-	■
Front seat lumbar support, 4-way electrically adjustable	■	■	■	■
Front seats, 20-way electrically adjustable with memory	■	-	-	-
Front driver's seat, 28-way electrically adjustable with memory	□	■	■	■
Front passenger's seat, 28-way electrically adjustable with memory	-	■	■	■
Front seats, F SPORT design	-	-	■	-
Heated and ventilated front seats	□	■	■	■
Heated rear seats	-	■	■	■
Heated steering wheel	-	■	■	■
Inlays, choice of wood styles	■	■	-	■
Inlays, Naguri-Style Aluminium	-	-	■	-
Inlays, Art Wood	-	○	-	○/□
Inlays, Kiriko Glass	-	-	-	○/□
Inlays, Laser Cut Special Open Pore	-	-	-	□
Leather trimmed gearshift knob	■	■	-	■
Machined aluminium sports pedals	-	-	■	-
Perforated leather trimmed gearshift knob	-	-	■	-
Rear butterfly headrests, electrically adjustable	-	■	-	■
Rear headrests, manually adjustable	■	-	■	-
Rear massage seats	-	-	-	■
Rear relaxation seat, 22-way electrically adjustable (passenger's side)	-	-	-	■
Rear seats, 18-way electrically adjustable	-	■	-	■
Rear seats, fixed	■	-	■	-
Rear-view mirror, electro chromatic (auto-dimming)	■	■	■	■
Roof lining, fabric	■	-	-	-
Roof lining, suede	-	■	■	■
Scuff plates, stainless steel with LEXUS inscription	■	■	-	■
Scuff plates, stainless steel, F SPORT design	-	-	■	-
Sunshade, rear window, electric	○ <sup>1</sup>	■	■	■
Sunshades, rear doors, electric	-	■	-	■
Sunshades, rear quarter window, electric	-	○	-	○
Tyre repair kit	■	■	■	■
Upholstery, F SPORT leather	-	-	■	-
Upholstery, leather	■	-	-	-
Upholstery, L-aniline leather	-	-	-	□
Upholstery, semi-aniline leather	-	■	-	■
Ventilated rear seats	-	■	-	■

PACKS	COMFORT	EXECUTIVE	F SPORT	LUXURY
<b>Lexus Safety System + A*</b>	–	□ <sup>2</sup>	–	□ <sup>2</sup>
Pre-Collision System (PCS) with Active Steering Assist	–	□	–	□
Front Cross Traffic Alert (FCTA)	–	□	–	□
Lexus CoDrive	–	□	–	□
Dynamic Radar Cruise Control (DRCC), all-speed	■	■	■	■
Lane Tracing Assist (LTA)	–	□	–	□
Road Sign Assist (RSA)	■	■	■	■
Adaptive High-beam System (AHS)	○	○/□	○	○/□
Head-Up Display (HUD)	○	○/□	○	○/□
Steering wheel mounted controls – audio / display / phone / voice / DRCC / LKA	■	■	■	■
<b>Leather plus with 19" alloy wheels</b>	□	–	–	–
19" cast alloy wheels, 10-twin spoke design, 245/50 R19 tyres	□ <sup>3</sup>	–	–	–
Front headrests, electrically adjustable	□	■	■	■
Heated and ventilated front seats	□	■	■	■
Front driver's seat, 28-way electrically adjustable with memory	□	■	■	■
<b>Leather plus with 20" alloy wheels</b>	□ <sup>2</sup>	–	–	–
20" cast alloy wheels, multi-spoke design, 245/45 R20 tyres	□	■	–	■
Front headrests, electrically adjustable	□	■	■	■
Front driver's seat, 28-way electrically adjustable with memory	□	■	■	■
Heated and ventilated front seats	□	■	■	■
Rear spoiler, without	□ <sup>4</sup>	○ <sup>4</sup>	○ <sup>4</sup>	○ <sup>4</sup>
<b>Crystal package</b>	–	–	–	□
Door panel finish, hand-pleated fabric	–	–	–	□
Inlays, Kiriko Glass	–	–	–	○/□
<b>L-aniline leather plus</b>	–	–	–	□
Upholstery, L-aniline leather	–	–	–	□
Door armrest and console box, L-aniline leather	–	–	–	□
Door panel finish, fabric	■	■	■	□
Inlays, Laser Cut Dark Wood	■	■	–	□
or Inlays, Open Pore Walnut	–	■	–	□
<b>L-aniline leather plus with Art Wood inlays</b>	–	–	–	□
Upholstery, L-aniline leather	–	–	–	□
Door armrest and console box, L-aniline leather	–	–	–	□
Door panel finish, fabric	■	■	■	□
Inlays, Art Wood Herringbone	–	○	–	○/□
or Inlays, Laser Cut Special Open Pore	–	–	–	□

■ Standard on specific grade(s).

□ Available as (part of) a pack.

○ Available as an option.

– Not available.

<sup>1</sup> Rear window sunshade is standard on LS 500.

<sup>2</sup> Only available on LS 500h.

<sup>3</sup> The LS 500 Comfort grade is equipped with 20" cast alloy wheels as standard. For this grade, the 19" alloy wheels are not included in the pack.

<sup>4</sup> The LS 500 is equipped as standard without rear spoiler. The spoiler is available as an option.

\* Do not use the Lexus Safety System + A instead of normal driving under any circumstances and please read the instructions before operating the system. The driver is always responsible for driving safely.

## TECHNICAL DATA

ENGINE	LS 500 AWD	LS 500h RWD (AWD)
Capacity (cm <sup>3</sup> )	3444	3456
Cylinders / Valves	V6 / 24	V6 / 24
Maximum power (DIN hp @ rpm)	417 @ 5200	299 @ 6600
Maximum power (kW @ rpm)	307 @ 5200	220 @ 6600
Maximum torque (Nm @ rpm)	600 @ 1600 - 4800	350 @ 5100
<b>ELECTRIC MOTOR</b>		
Type	-	AC synchronous, permanent magnet
Maximum power (DIN hp)	-	179
Maximum power (kW)	-	132
Maximum torque (Nm)	-	300
<b>TRANSMISSION</b>		
Type	10-speed Direct Shift Automatic	Multi Stage Hybrid
Drive	All-Wheel Drive	Rear-Wheel Drive (All-Wheel Drive)
<b>TOTAL SYSTEM OUTPUT</b>		
Total power (DIN hp)	417	359
Total power (kW)	307	264
<b>PERFORMANCE</b>		
Maximum speed (km/h)	250	250
Acceleration 0-100 km/h (s)	4.9	5.4 (5.5)
<b>FUEL CONSUMPTION* (l/100 km)</b>		
Urban	13.5	7.5 / 7.9 (8.2 / 8.3)
Extra urban	7.8	5.9 / 6.1 (6.6 / 6.7)
Combined	9.9	6.2 / 6.5 (7.0 / 7.1)
<b>CO<sub>2</sub> EMISSIONS* (g/km)</b>		
Urban	305	171 / 178 (186 / 188)
Extra urban	178	134 / 137 (150 / 152)
Combined	225	141 / 147 (158 / 161)
<b>WEIGHTS (kg)</b>		
Gross vehicle	2760	2725 (2800)
Kerb weight (min. - max.)	2225 - 2385	2175 - 2345 (2250 - 2425)
<b>CAPACITIES** (l)</b>		
Luggage volume	480	430
Fuel tank capacity	82	82

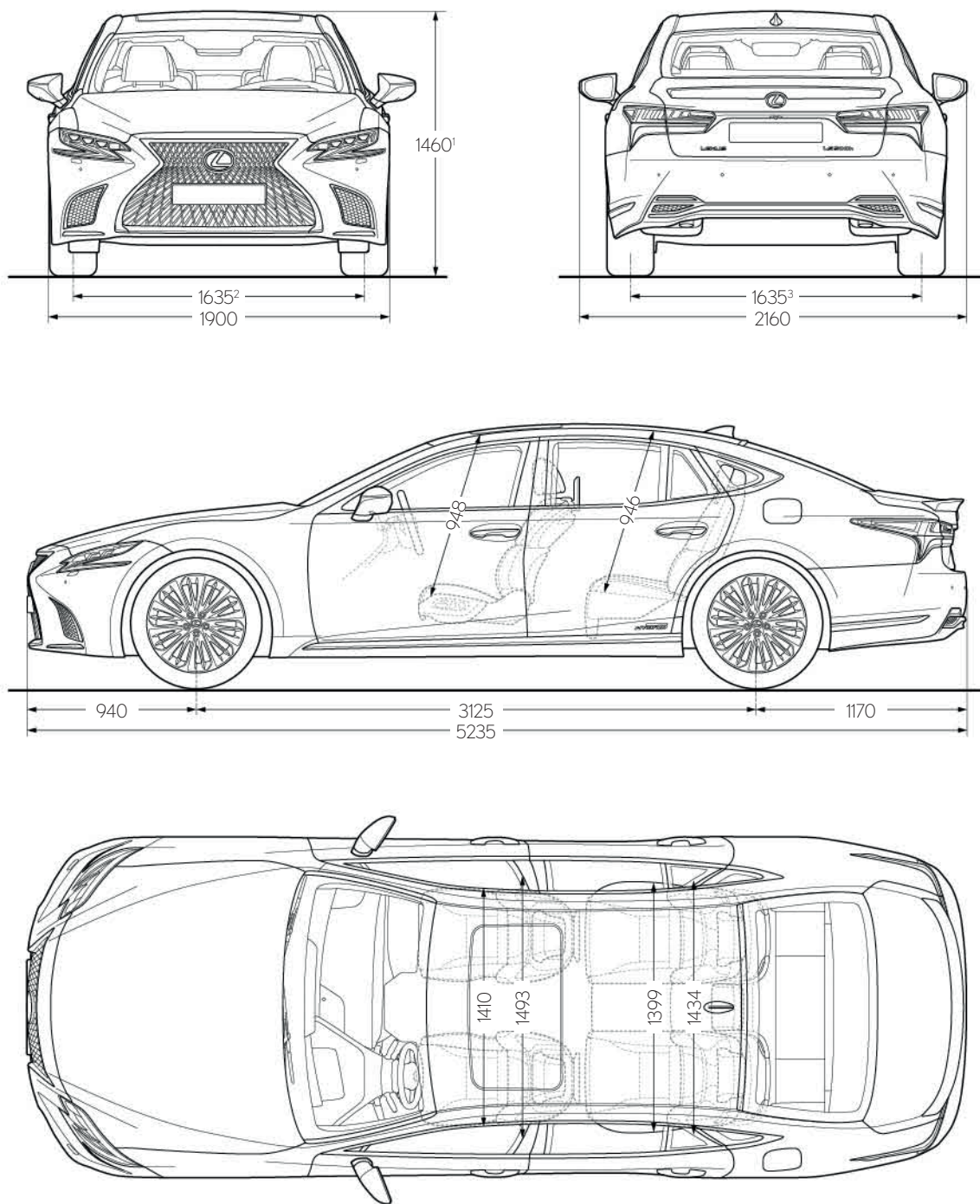
\* For the LS 500h, figures differ by grade and alloy wheel size. 1st figure is for the Comfort grade specified as standard with 19" alloy wheels. 2nd figure is for all other grades with standard or optional 20" alloy wheels.

The fuel consumption and CO<sub>2</sub> values are measured in a controlled environment, in accordance with the requirements of Directive 80/1268/EEC incl. its amendments, on a vehicle with European Standard equipment. For further information, or if you are interested in purchasing a vehicle with European Standard equipment, please contact your Lexus Authorised Importer. The fuel consumption and CO<sub>2</sub> values of your vehicle may vary from those measured. Driving behaviour as well as other factors (such as road conditions, traffic, vehicle condition, tyre pressure, installed equipment, load, number of passengers, etc) play a role in determining a car's fuel consumption and CO<sub>2</sub> emissions.

\*\* Luggage volume is calculated as per the VDA method.

Please note: further Technical Data, including any updates, can be found at [www.lexus.eu](http://www.lexus.eu)

TECHNICAL DATA



<sup>1</sup> Figure quoted is for All-Wheel Drive models equipped with air suspension. Equivalent figure for models with coil spring suspension is 1470.

For Rear-Wheel Drive models, figures are 1450 with air suspension and 1460 with coil spring suspension.

<sup>2</sup> Figure quoted is for All-Wheel Drive models equipped with air suspension. Equivalent figure for models with coil spring suspension and for F SPORT is 1630.

For Rear-Wheel Drive models, figures are 1630.

<sup>3</sup> For F SPORT models specified with 275/40 R20 rear wheels, the figure is 1615.

## THE LEXUS EXPERIENCE



Throughout your vehicle's life, we'll endeavour to ensure an amazing ownership experience, offering unequalled service and seamless maintenance work, all orchestrated to provide complete satisfaction and total peace of mind. When you visit our showrooms, we strive to anticipate your every need and make available the finest facilities for you to enjoy in a warm and relaxed atmosphere. In the modern Lexus lounge, you can catch up on news, browse the Internet, or enjoy refreshments. While you relax, Lexus technicians will work with precision and efficiency to get you back on the road with minimum interruption to your day.

